

# Westhorpe Park, Marlow, Buckinghamshire, SL7

**Quickmove**  
PROPERTIES



£349,950

 x 2

 x 2

A Tingdene Addington (45'x20') home located on a corner plot on this sought after park next to Westhorpe House in Little Marlow. This home, built in 2023 offers spacious and luxurious accommodation, driveway parking for 3/4 Cars, a small easy-to-maintain garden with a shed, an en-suite shower room and a wardrobe area to the main bedroom and living areas with vaulted ceilings.

The lovely residential development is located on the outskirts of the town of Marlow. Located Northwest of London and on the edge of Chiltern Hills, which is an Area of Outstanding Natural Beauty. Marlow is within walking distance from the park and has a train station, pubs, restaurants, and shops. Slough is a 20-minute drive and Reading is a 30-minute drive away.

Age restriction: Over 45s

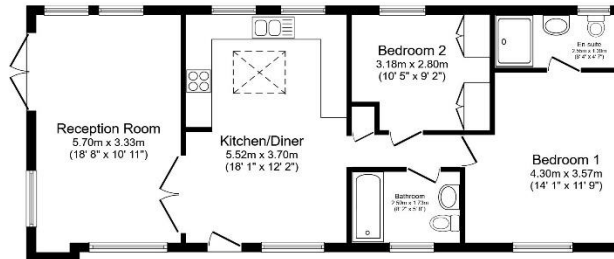
Pet friendly: Yes

Site fees (at time of listing): £200 per month

Residential license

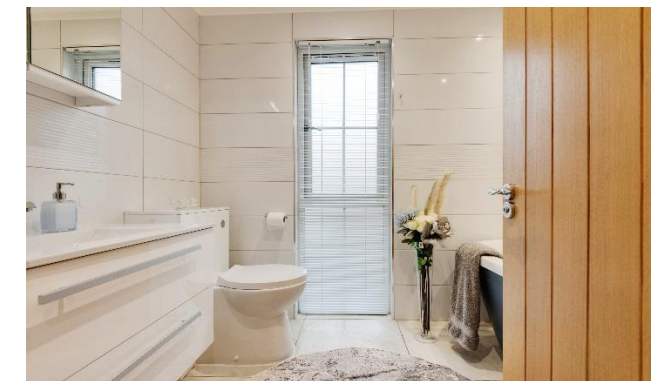
### Key Features

- Community Living
- Nearly new home
- Over 45s
- Part Exchange Available
- Pet-Friendly
- Pre-owned park home
- Residential Development
- Town location
- Two Double Bedrooms
- Well maintained home



Total floor area 74.1 sq.m. (798 sq.ft.) approx

This floor plan is for illustrative purposes only. It is not drawn to scale. Any measurements, floor areas (including any total floor area), openings and orientation are approximate. No details are guaranteed, they cannot be relied upon for any purpose and they do not form part of any agreement. No liability is taken for any error, omission or misstatement. A party must rely upon its own inspection(s). Powered by [www.kisaplan.com](http://www.kisaplan.com)



### House to sell?

Hassle-free Property Part-Exchange is available from Quickmove Properties, with no estate agent fees, no solicitor's fees and no market uncertainty.

### CONTACT US

01793 840917

[advice@quickmoveproperties.co.uk](mailto:advice@quickmoveproperties.co.uk)

