

Oxford, Oxfordshire, OX44



£269,000



Park homes are perfect for those looking for a detached, easy to maintain, bungalow-style retirement property. The fully furnished homes available have two bedrooms and two bathrooms, a comfortable living area, garden space and a driveway.

This residential park home estate consists of 110 homes with the majority of residents being of semi-retirement age. This development is in a rural setting on the outskirts of Garsington near the University City of Oxford. The park provides a peaceful environment for the residents with excellent transport links to Oxford and the surrounding areas. There are also a host of retail outlets within a short walk of the park.

Age restriction: Over 55s

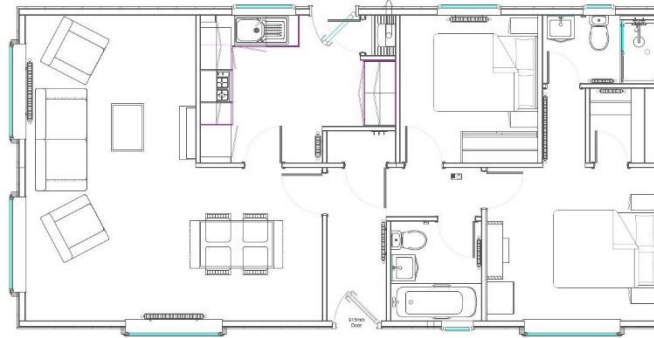
Pet friendly: TBC

Site fees (at time of listing): £228.55 per month

Residential license

Key Features

- Brand new home
- Established Park
- Exceptionally High Specification
- Fully Furnished
- Garage
- Garden space
- Modern design
- Over 55's
- Part Exchange Available
- Residential Development



House to sell?

Hassle-free Property Part-Exchange is available from Quickmove Properties, with no estate agent fees, no solicitor's fees and no market uncertainty.

CONTACT US

01793 840917

advice@quickmoveproperties.co.uk

Quickmove
PROPERTIES

