

Hyde Park, Ely, Cambridgeshire, CB61FE

Quickmove
PROPERTIES



£160,000

 x 2

 x 2

This pre-owned, Prestige Reprise (40'x20') park home is perfect for those looking for a detached, easy-to-maintain, bungalow-style property. The home has a modern kitchen and utility room, separate dining and living rooms, two bedrooms, a study, an en suite and a bathroom. The landscaped exterior boasts a driveway and a private, easy-to-maintain garden space.

Hyde Park is located on the edge of Littleport village, 22 miles north of Cambridge. This established residential development is well-landscaped and offers a private, gated community. The village has all your local amenities, including a train station, leisure centre, shops and parks. The River Ouse runs alongside the village and provides a lovely walking route.

Age restriction: Over 55s

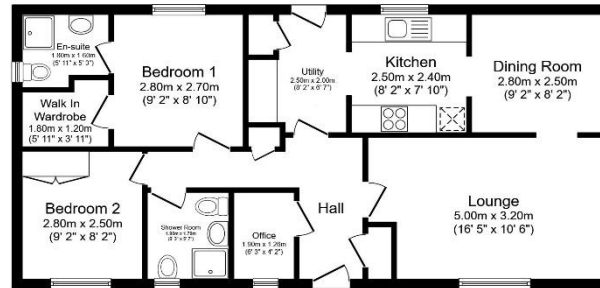
Pet friendly: Yes

Site fees: £144 per month

Residential license

Key Features

- Garden space
- Over 55's
- Part Exchange Available
- Pet-Friendly
- Pre-owned park home
- Residential Development
- Study
- Two Bedrooms
- Utility room
- Gated development



Total floor area 70.4 m² (758 sq.ft.) approx

This floor plan is for illustrative purposes only. It is not drawn to scale. Any measurements, floor areas (including any total floor area), openings and orientation are approximate. No details are guaranteed, they cannot be relied upon for any purpose and they do not form part of any agreement. No liability is taken for any error, omission or misstatement. A party must rely upon its own inspection(s). Powered by www.localagent.com



House to sell?

Hassle-free Property Part-Exchange is available from Quickmove Properties, with no estate agent fees, no solicitor's fees and no market uncertainty.

CONTACT US

01793 840917

advice@quickmoveproperties.co.uk

