

Royale Heights, Poole, Dorset, BH16



£199,500



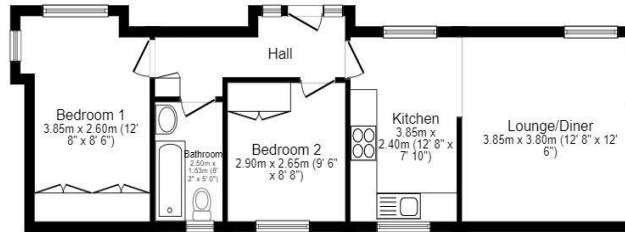
This pre-owned, modern Stately Albion Wentwood park bungalow (45'x14') is perfect for those looking for a detached, easy to maintain, bungalow style property. The well presented home features a modern kitchen, dining and living area, two bedrooms and one bathroom. The exterior includes a driveway and an easy-to-maintain garden area.

Royale Heights is a private, gated RoyaleLife development of detached luxury park homes for the over 45s, located in Beacon Hill close to Poole Harbour, Dorset. Set within beautifully landscaped grounds, each home enjoys modern design, ample parking, and a safe, welcoming community of like-minded residents. The development is incredibly convenient due to easy access into neighbouring towns including the traditional of Wimborne, Poole, and Bournemouth.

Age restriction: Over 45s
 Pet friendly: Yes
 Site fees: £263.38 per month
 Residential license

Key Features

- Community Living
- Garden space
- Over 45s
- Part Exchange Available
- Pet-friendly
- Pre-owned park home
- Prestigious RoyaleLife development
- Private
- Gated Development
- Two Bedrooms



House to sell?
 Hassle-free Property Part-Exchange is available from Quickmove Properties, with no estate agent fees, no solicitor's fees and no market uncertainty.

CONTACT US
 01793 840917
advice@quickmoveproperties.co.uk

