

Riverview Park, Chelmsford, Essex, CM3



£165,000



This pre-owned, well maintained park home is perfect for those looking for a detached, easy to maintain, bungalow-style property. The home features a fully fitted kitchen, a comfortable living area, two bedrooms, and a bathroom. There is a private garden space and driveway.

The riverside village of Althorne, overlooking the river Crouch is the lovely setting for Riverview Park, 15 miles from Chelmsford and 3 miles from Burnham-on-Crouch. Sailing, fishing, and a boat marina are available locally, with several good golf clubs. A bus service runs from the park to Chelmsford fortnightly. The village of Althorne has a post office and general store. Burnham-on-Crouch has a good-sized supermarket and doctor and dentist.

Age restriction: Over 50s

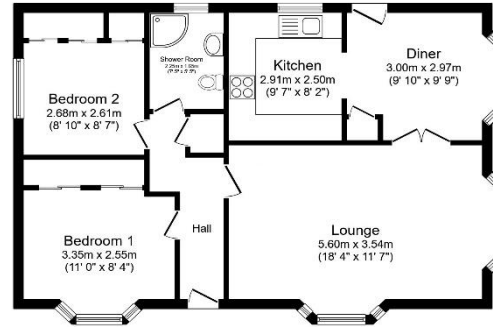
Pet friendly: No

Site fees: £235 per month

Residential license

Key Features

- Community Living
- Established Park
- Garden space
- Over 50s
- Parking space
- Part Exchange Available
- Pre-owned park home
- Residential Development
- Two Bedrooms
- Well maintained home



Total floor area 69.7 sq.m. (750 sq.ft.) approx

This floor plan is for illustrative purposes only. It is not drawn to scale. Any measurements, floor areas (including any total floor area), openings and orientations are approximate. No details are guaranteed, they cannot be relied upon for any purpose and they do not form part of any agreement. No liability is taken for any error, omission or misstatement. A party must rely upon its own inspection(s). Powered by www.floorplan.com



House to sell?

Hassle-free Property Part-Exchange is available from Quickmove Properties, with no estate agent fees, no solicitor's fees and no market uncertainty.

CONTACT US

01793 840917

advice@quickmoveproperties.co.uk

Quickmove
PROPERTIES

