

Ashford, Kent, TN27



£190,000



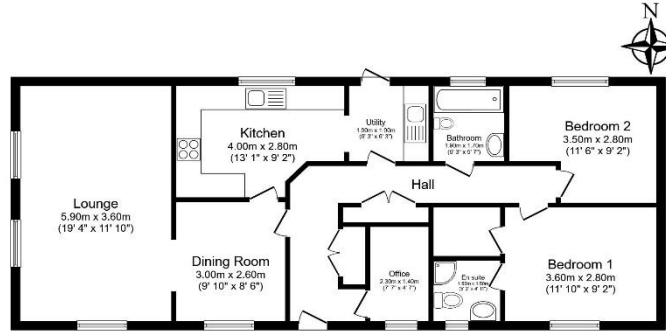
This pre-owned Omar Sheringham (50'x20') park home is perfect for those looking for a detached, easy-to-maintain, bungalow-style property. The home features a spacious kitchen, living and dining area, two double bedrooms, study, utility, en suite and bathroom. The home is on a generous plot and boasts a private garden and driveway.

The countryside location of the park provides much to do in the local area, including many historical sites wand walking routes. A handful of golf courses are in easy reach, as are numerous fishing lakes. Camber Sands is a short drive from the park, with picturesque dunes and wildlife, ideal for rambling and dog walking. Ashford town is 25 minutes from the park, with plenty of high street shops, restaurants, and entertainment.

Age restriction: Over 50s
 Site fees: £252.94 per month
 Pet friendly: Yes
 Residential license

Key Features

- Community Living
- Established Park
- Garden space
- Landscaped grounds
- Parking space
- Study
- Part Exchange Available
- Pet-Friendly
- Residential Development
- Two Double Bedrooms



Total floor area 89.1 sq.m. (959 sq.ft.) approx

This floor plan is for illustrative purposes only. It is not drawn to scale. Any measurements, floor areas (including any total floor area), openings and orientation are approximate. No details are guaranteed, they cannot be relied upon for any purpose and they do not form part of any agreement. No liability is taken for any error, omission or misstatement. A party must rely upon its own inspections. Powered by www.floorplan.com



CONTACT US

01793 840917

advice@quickmoveproperties.co.uk

