

# Bordon, Hampshire, GU35



£315,000



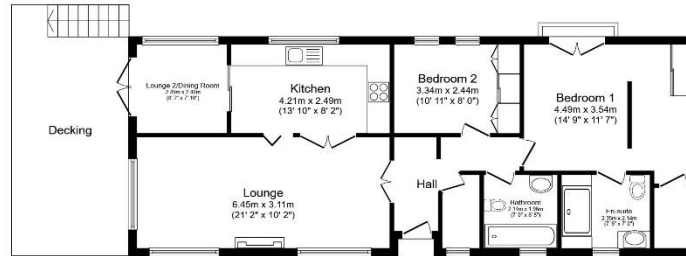
This pre-owned, well maintained Omar Anniversary (50'x20') park home is perfect for those looking for a detached, easy to maintain, bungalow-style retirement property. The exterior of this home has a garden space and a large 20' south-facing decking. The home has a modern spacious kitchen leading to a dining room/second living room opening out onto the decking. The kitchen also has bi-fold doors leading to a comfortable living room and two double bedrooms.

The park is surrounded by stunning countryside in a beautiful corner of East Hampshire. While the setting is secluded and peaceful, you're also close to the hustle and bustle of larger towns such as Alton, Fareham, Haslemere, Guildford and the charming market town of Petersfield. The development is also just minutes away by car from Whitehill Forest shopping centre.

Age restriction: Over 45's  
 Site fees: £278 per month  
 Pet friendly: Yes  
 Residential licence

### Key Features

- Garden space
- Modern design
- Over 45s
- Part Exchange Available
- Pet-Friendly
- No chain
- Gated Development
- Residential Development
- Two Bedrooms
- 40 minutes from the coast



Total floor area 83.4 m<sup>2</sup> (897 sq.ft.) approx

This floor plan is for illustrative purposes only. It is not drawn to scale. Any measurements, floor area (including any total floor area), openings and orientation are approximate. No details are guaranteed, they cannot be relied upon for any purpose and they do not form part of any agreement. No liability is taken for any error, omission or misstatement. A party must rely upon its own inspection(s). Powered by [www.fiscatagent.com](http://www.fiscatagent.com)



### CONTACT US

01793 840917

[advice@quickmoveproperties.co.uk](mailto:advice@quickmoveproperties.co.uk)

