

Kingsway Park, Bristol, Gloucestershire, BS30



£175,000



This pre-owned, well maintained park home is perfect for those looking for a detached, easy-to-maintain, bungalow-style property. The home is vacant and unfurnished, with a spacious kitchen, living room with an electric fireplace, double bedroom with built-in wardrobes, and a bathroom with a tub and shower head. The home also has a fenced-off, private, paved garden space.

Kingway Park is a popular, established residential development located in a desirable area on the outskirts of Bristol. The development is located 6 miles from the centre of Bristol, in the suburb of Warmley. Warmley is a village in South Gloucestershire, between Bristol and Bath, with a lovely community feel. It is also home to some interesting landmarks including a World War One memorial and a statue of Neptune. Just outside of Warmley is the start of the Cotswolds, which is home to beautiful scenery, villages, and walking routes.

Age restriction: Over 50s

Pet friendly: Yes

Site fees (at time of listing): £165.45 per month

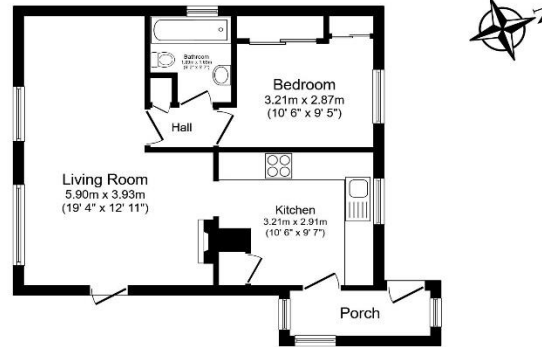
Residential license

House to sell?

Hassle-free Property Part-Exchange is available from Quickmove Properties, with no estate agent fees, no solicitor's fees and no market uncertainty.

Key Features

- Community Living
- Garden space
- Over 50s
- Part Exchange Available
- Pet-Friendly
- Pre-owned park home
- Property is vacant
- Residential Development
- Town location



Total floor area 45.7 sq.m. (491 sq.ft.) approx

This floor plan is for illustrative purposes only. It is not drawn to scale. Any measurements, floor areas (including any total floor area), openings and orientation are approximate. No details are guaranteed, they cannot be relied upon for any purpose and they do not form part of any agreement. No liability is taken for any error, omission or misstatement. A party must rely upon its own inspection(s). Powered by www.houseagent.com



CONTACT US

01793 840917

advice@quickmoveproperties.co.uk

