

Saltburn-By-The-Sea, North Yorkshire, TS12

Quickmove
PROPERTIES



£180,000

 x 2

 x 2

This luxury two double bedroom (40'x20') park home bungalow built by Manor Homes is available to view now. The modern, well-maintained home has been well landscaped, with a private, low maintenance garden. The home has spacious kitchen, comfortable living and dining area, two double bedrooms, an en suite and a family bathroom.

This park is within walking distance of Saltburn-by-the-Sea town centre where a full range of leisure and shopping facilities are available. Saltburn-by-the-Sea has maintained much of its original charm as a Victorian seaside resort. The Saltburn coastline is recognised as part of the 36 miles of Heritage Coast, crowned by dramatic headlands. The Heritage coast south from Saltburn climbs high above smugglers' secret caves as it continues south towards Whitby.

Age restriction: Over 45's

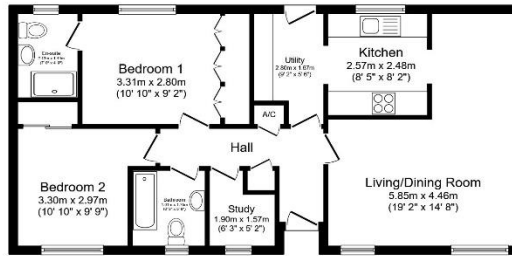
Pet friendly: Yes

Site fees: £197.60 per month

Residential license

Key Features

- Coastal Location
- Garden space
- Modern design
- Over 45s
- Part Exchange Available
- Pet-Friendly
- Pre-owned park home
- Sought After Residential Park
- Two Bedrooms
- Well-maintained home



Total floor area 69.5 m² (749 sq.ft.) approx

This floor plan is for illustrative purposes only. It is not drawn to scale. Any measurements, floor areas (including any total floor area), openings and orientation are approximate. No details are guaranteed, they cannot be relied upon for any purpose and they do not form part of any agreement. No liability is taken for any error, omission or misstatement. A party must rely upon its own inspection(s). Powered by www.idealagent.com



House to sell?

Hassle-free Property Part-Exchange is available from Quickmove Properties, with no estate agent fees, no solicitor's fees and no market uncertainty.

CONTACT US

01793 840917

advice@quickmoveproperties.co.uk

Quickmove
PROPERTIES



The Property
Ombudsman