

Milford-On-Sea, Hampshire, SO41



Offers in Excess Of £450,000



This pre-owned, modern Wessex Allure (45'x20') luxury park home is perfect for those looking for a detached, easy-to-maintain, bungalow-style property. The home is located on a sought-after development and has stunning, uninterrupted views across Sturt Pond Nature Reserve. The exterior of the home has a garden space, shed and large decking to enjoy the wonderful views from. The home has a modern open plan kitchen, dining and living area, a snug, two double bedrooms, an en suite shower room and a bathroom.

This park is fabulously located within the thriving village of Milford-On-Sea which hosts a fine selection of shops, award-winning restaurants, and a vibrant village green where you can enjoy a wide selection of events throughout the year. The area is popular with walkers, gentle strolls can be enjoyed along the Solent Coastal Path not to mention the wonderful expanse of the New Forest National Park which is a short drive away.

Age restriction: Over 45s

Pet friendly: Yes

Site fees (at time of listing): £294.07 per month

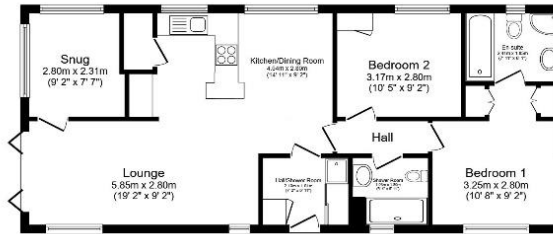
Residential license

House to sell?

Hassle-free Property Part-Exchange is available from Quickmove Properties, with no estate agent fees, no solicitor's fees and no market uncertainty.

Key Features

- Coastal Location
- Garden space
- Over 45s
- Part Exchange Available
- Pet-Friendly
- Pre-owned park home
- Sought After Residential Park
- Stunning views
- Two Double Bedrooms
- Waterside Property



Total floor area 77.1 m² (829 sq.ft.) approx

This floor plan is for illustrative purposes only. It is not drawn to scale. Any measurements, floor areas (including any total floor area), openings and orientation are approximate. No details are guaranteed, they cannot be relied upon for any purpose and they do not form part of any agreement. No liability is taken for any error, omission or misstatement. A party must rely upon its own inspection(s). Powered by www.foiasagent.com





CONTACT US

01793 840917

advice@quickmoveproperties.co.uk

Quickmove
PROPERTIES

