

# Lowestoft, Suffolk, NR33



£69,995



This brand-new, modern-furnished Atlas Status (40'x12') luxury park home is perfect for those looking for a detached, easy-to-maintain, bungalow-style property. The home has a modern, spacious kitchen with integrated appliances, a comfortable living and dining area, two double bedrooms, an en suite and a bathroom.

The location of this development is ideal for exploring the Suffolk coastline and countryside, and is just 15 minutes from the seaside towns of Lowestoft and Southwold where you can find plenty of family friendly attraction, independent shops and restaurants, as well as traditional beach huts and a pier. The larger city of Norwich is a 50 minute drive from the park.

Age restriction: None

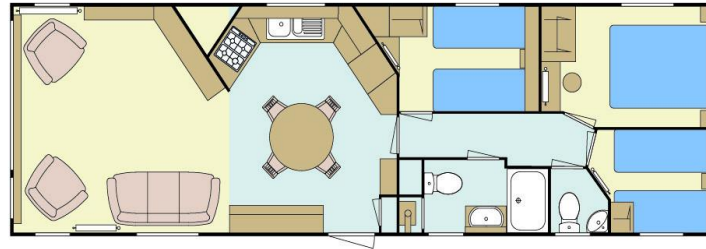
Pet friendly: Yes

Site fees: £4,369 to 5,134 per year

Leisure license

### Key Features

- 10 month leisure license
- Close to public transport
- Close to the beach
- Coastal Location
- Family Park
- House buying service
- Leisure facilities onsite
- Modern design
- No age restriction
- Private



## CONTACT US

01793 840917

[advice@quickmoveproperties.co.uk](mailto:advice@quickmoveproperties.co.uk)

**Quickmove**  
PROPERTIES

