

Bovey Tracey, Devon, TQ13



£262,000



This brand new, fully furnished modern Manor Berkeley Plus (45'x14') park home boasts the latest construction techniques, design, and modern full furnishings. The home has a spacious kitchen, living and dining area, two bedrooms and two bathrooms.

This residential development is conveniently situated on the outskirts of Bovey Tracey, a typical small Devon town with good shopping facilities. The Park features mature woodland, a large lake and views of the rolling hills of Dartmoor. A bus service to Newton Abbot stops at the Park entrance and a mobile library calls fortnightly.

There are many places of interest to explore, such as Torbay, the cathedral City of Exeter and of course the beauty of Dartmoor which is only a 10-minute drive away. All the new homes sited are fully furnished and have tiled roofs, mains gas central heating and double glazing.

Age restriction: Over 50's

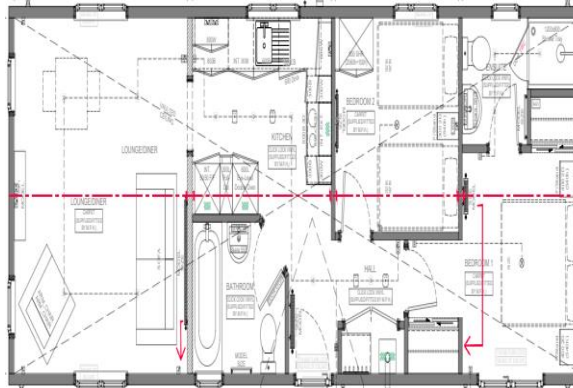
Pet friendly: Yes (one per home)

Site fees: £273 per month

Stock images have been used, the home on site may vary

Key Features

- Brand New Design
- Brand new home
- Community Living
- Exceptionally High Specification
- Fully Furnished
- Outstanding Location
- Over 50s
- Part Exchange Available
- Pet-Friendly
- Residential Development



House to sell?

Hassle-free Property Part-Exchange is available from Quickmove Properties, with no estate agent fees, no solicitor's fees and no market uncertainty.

CONTACT US

01793 840917

advice@quickmoveproperties.co.uk

Quickmove
PROPERTIES

