

Birtley, County Durham, DH2

Quickmove
PROPERTIES



£104,995

 x 2

 x 2

This brand new, modern-furnished Omar Image (40'x20') luxury park home is perfect for those looking for a detached, easy to maintain, bungalow-style property. The home features a modern, fitted kitchen with integrated appliances and a dining and living area with comfortable furniture and large windows. The home also has two double bedrooms, an en suite and a family bathroom.

The park is surrounded by stunning countryside with views of the Angel of the North, and is within a short distance to the A1, Team Valley Retail Park and Birtley Town Centre. Next to the park is Lamesley Pasture Nature Reserve which is one of the few undeveloped river floodplains in the area and contains designated Local Wildlife Sites.

Age restriction: Over 45s

Pet friendly: Yes

Site fees: Approx £221.13 per month

Residential license

Stock images have been used, the home on-site may vary.

Key Features

- Community Living
- Established Park
- Fully Furnished
- Over 45's
- Part Exchange Available
- Residential Development
- Rural Location
- Town facilities nearby
- Brand new home

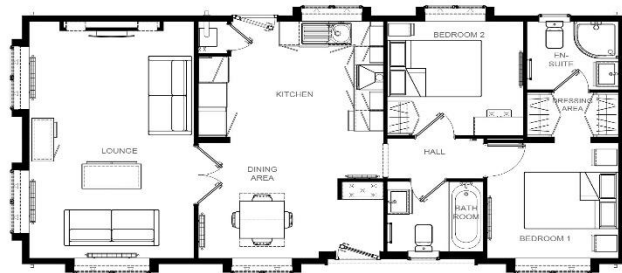
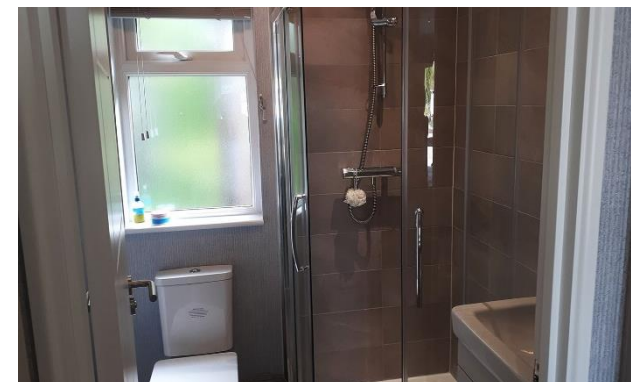


Image 40' x 20' 2DB



CONTACT US

01793 840917

advice@quickmoveproperties.co.uk

