

# Clacton-On-Sea, Essex, CO16



£219,995



This brand-new, modern-furnished Omar Image (38'x20') luxury park home is perfect for those looking for a detached, easy-to-maintain, bungalow-style property. The home features a spacious kitchen and dining room, a separate comfortable living room with an electric fireplace, two double bedrooms, an en suite and a bathroom. The landscaped exterior boasts a landscaped development and parking.

This development is well located for exploring the South East of England. Located on the edge of Clacton-on-Sea, the homes are a short drive from the coast, beaches, and Clacton-on-Sea pier. Colchester town is 13 miles away, with popular high-street shopping, a hospital, a castle and a zoo. Stansted Airport is also 49 miles away.

Age restriction: Over 45s

Pet friendly: Yes

Site fees (at time of listing): £250 per month

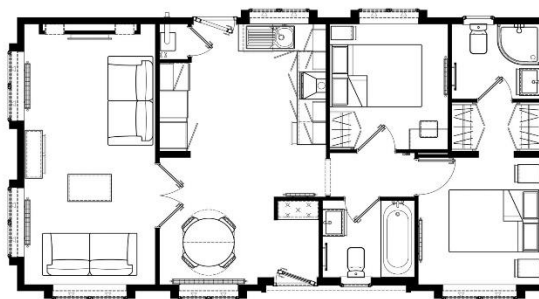
Residential license

### House to sell?

Hassle-free Property Part-Exchange is available from Quickmove Properties, with no estate agent fees, no solicitor's fees and no market uncertainty.

### Key Features

- Brand new home
- Community Living
- Fully Furnished
- Over 45s
- Parking space
- Part Exchange Available
- Pet-Friendly
- Private, Gated Development
- Residential Development



## CONTACT US

01793 840917

[advice@quickmoveproperties.co.uk](mailto:advice@quickmoveproperties.co.uk)

**Quickmove**  
PROPERTIES

