

# Seascale, Cumbria, CA20



£160,000



This brand-new, furnished luxury park home (40'x20') is perfect for those looking for a detached, easy to maintain, bungalow-style retirement property. The home has a modern kitchen and dining area, a comfortable living room, two double bedrooms, an en suite and a bathroom.

This wonderful residential park is well established and suitable for the retired or semi-retired (50+), located within the village of Gosforth in the Lake District National Park. With its mature trees and gardens, it enjoys magnificent views of the Lakeland fells, including Scafell Pike, England's highest mountain. Wast Water, one of the area's most beautiful lakes, is nearby in Wasdale.

Age restriction: Over 50's

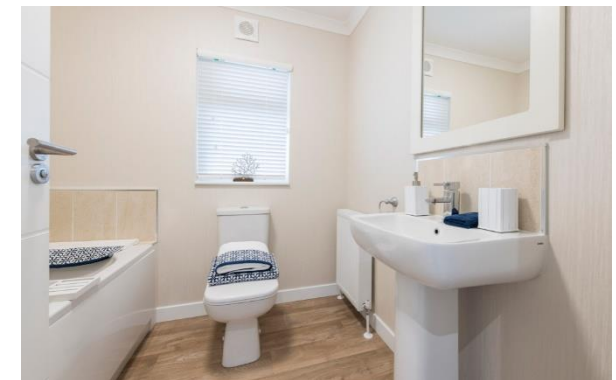
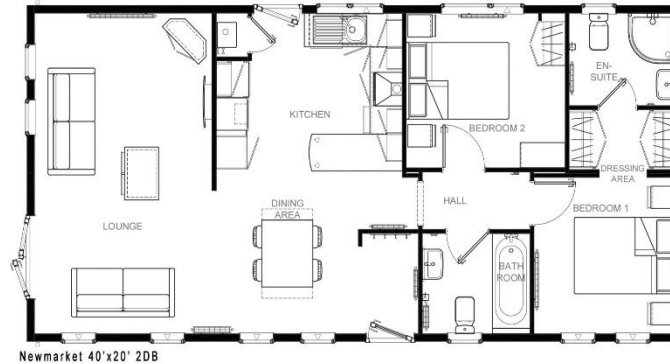
Pet friendly: Yes

Site fees: £157 per month

Residential license

### Key Features

- Community Living
- Fully Fitted Kitchen
- Fully Furnished
- Modern design
- Outstanding Location
- Over 50s
- Part Exchange Available
- Pet-Friendly
- Residential Park
- Two Double Bedrooms



### House to sell?

Hassle-free Property Part-Exchange is available from Quickmove Properties, with no estate agent fees, no solicitor's fees and no market uncertainty.

### CONTACT US

01793 840917

advice@quickmoveproperties.co.uk

