

# Birtley, Tyne and Wear, DH2

**Quickmove**  
PROPERTIES



£97,995

 x 2

 x 2

This brand new, modern-furnished Omar Newmarket (36'x20') luxury park home is perfect for those looking for a detached, easy to maintain, bungalow-style property. The home features a modern, fitted kitchen with integrated appliances and a dining and living area with comfortable furniture and large windows. The home also has two double bedrooms and two bathrooms.

This established residential development is situated in a rural though easily accessible location. The park is spread over 17 acres of land and offers plenty of walking routes, providing the ideal setting for rest and relaxation.

The park is surrounded by stunning countryside with views of the Angel of the North, and is within a short distance to the A1, Team Valley Retail Park and Birtley Town Centre. Next to the park is Lamesley Pasture Nature Reserve. The park is also within easy reach of Newcastle Upon Tyne and the town of Washington is just 5 miles away. Nearby is Ravensworth Golf Club, a fantastic 18-hole golf course that was formed in 1906. The park is also just 10 miles from the city of Sunderland and Roker Beach.

Age restriction: Over 45's

Pet friendly: Yes

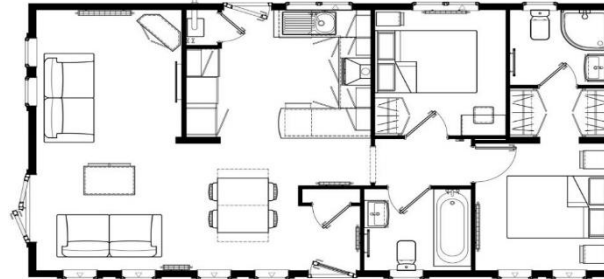
Site fees: Approx £210 per month

### House to sell?

Hassle-free Property Part-Exchange is available from Quickmove Properties, with no estate agent fees, no solicitor's fees and no market uncertainty.

### Key Features

- Brand new home
- Enhanced part exchange for a quick sale
- Exceptionally High Specification
- Over 45s
- Pet-Friendly
- Residential Development
- Fully furnished
- Park set on 17 acres of land



## CONTACT US

01793 840917

[advice@quickmoveproperties.co.uk](mailto:advice@quickmoveproperties.co.uk)

**Quickmove**  
PROPERTIES



The Property  
Ombudsman