

Lincoln, Lincolnshire, LN6



£149,995



This brand new, modern-furnished Omar Regency (36'x20') luxury park home is perfect for those looking for a detached, easy to maintain, bungalow-style property. The home has a fully fitted kitchen, dining area and comfortable living room. There are two bedrooms, an en suite and a bathroom.

This established residential park is exclusive for the over 45s. Each home has its own parking and pets are allowed (one per home). This development is well located on the edge of Lincoln, near the Whisby Nature Park. Lincoln has all big city facilities and amenities, including the nearest medical centre, supermarkets and high street shopping. The park is located near the A46, making it easy to access the rest of the North of England, including nearby cities Nottingham and Sheffield.

Age restriction: Over 45s

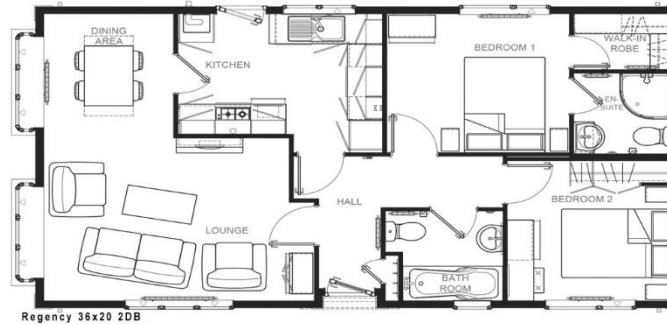
Pet friendly: Yes

Site fees: £185 per month

Residential license

Key Features

- Amenities within walking distance
- Brand new home
- Exceptionally High Specification
- Fully Furnished
- Over 45s
- Parking space
- Part Exchange Available
- Pet-Friendly
- Residential Development
- Two Bedrooms



House to sell?

Hassle-free Property Part-Exchange is available from Quickmove Properties, with no estate agent fees, no solicitor's fees and no market uncertainty.

CONTACT US

01793 840917

advice@quickmoveproperties.co.uk

