

Camborne, Cornwall, TR14



£214,995



This brand new, modern-furnished Willerby Hazelwood (40'x20') luxury park home is perfect for those looking for a detached, easy to maintain, bungalow-style property. The home features a modern kitchen with integrated appliances, a comfortable living area and two double bedrooms.

This residential development located on the outskirts of the popular Cornish town of Camborne is exclusive for the over 45s and is pet friendly. The park home lifestyle provides community living for like-minded people. The parks are often landscaped and private, to offer safe and secure living. Often built-in countryside locations, the parks offer their residents the opportunity for an active lifestyle that is also suitable for pets.

Age restriction: Over 45s

Pet friendly: Yes

Site fees: £244.29 per month

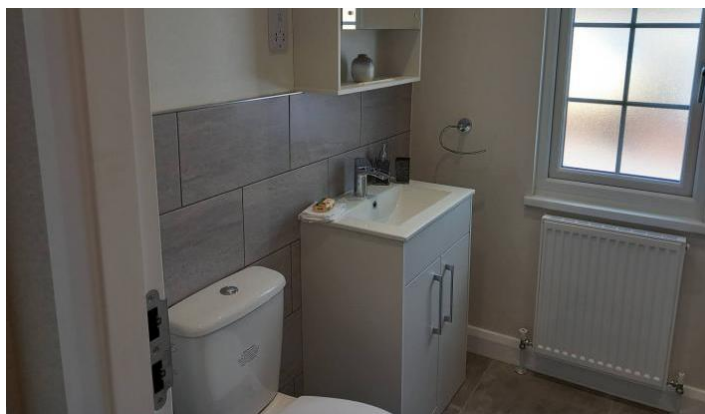
Residential license

House to sell?

Hassle-free Property Part-Exchange is available from Quickmove Properties, with no estate agent fees, no solicitor's fees and no market uncertainty.

Key Features

- Brand new home
- Fully Furnished
- Two double bedrooms
- Over 45s
- Part Exchange for a Quick Sale
- Pet friendly site



CONTACT US

01793 840917

advice@quickmoveproperties.co.uk

Quickmove
PROPERTIES

