

# Northwich, Cheshire, CW8



£215,000



This brand new, modern-furnished Willerby Kingswood (40'x20') luxury park home is perfect for those looking for a detached, easy-to-maintain, bungalow-style property. The home features a modern kitchen with integrated appliances, a comfortable living and dining area, two double bedrooms, an en suite and a family bathroom.

Delamere Grove is surrounded by beautiful natural surroundings which is teeming with wildlife. The development is small, consisting of just 25 homes. The development is located less than a mile from the Delamere Forest, where you can enjoy miles of walking routes through the country's largest woodland. Frodsham village is 15 minutes from the park, where you can find the closest medical centre, train station and Morrisons supermarket.

Age restriction: Over 50s

Pet friendly: Yes

Site fees (at time of listing): £160 per month

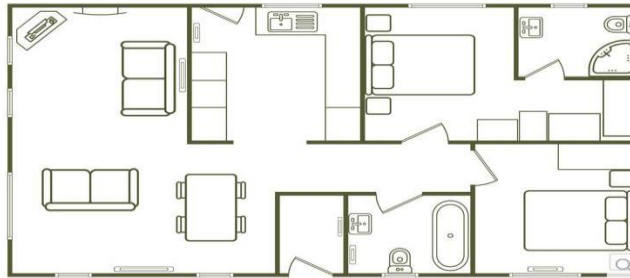
Residential license

### House to sell?

Hassle-free Property Part-Exchange is available from Quickmove Properties, with no estate agent fees, no solicitor's fees and no market uncertainty.

### Key Features

- Brand new home
- Fully Furnished
- Landscaped grounds
- Over 50s
- Parking for two cars
- Part Exchange Available
- Pet-friendly
- Residential Development
- Rural Location
- Two Bedrooms



## CONTACT US

01793 840917

[advice@quickmoveproperties.co.uk](mailto:advice@quickmoveproperties.co.uk)

**Quickmove**  
PROPERTIES

