

# The Tides, Doniford, Somerset, TA23

**Quickmove**  
PROPERTIES



£245,950

 x 2

 x 2

A wonderful park bungalow (50'x20') built in 2015 and in excellent condition with a remaining ten-year warranty. The exterior features a garden area with a private patio and 7' x 5' fireproof shed. The garden area enjoys stunning countryside views towards the coast. The spacious property includes an open plan kitchen/dining room, utility room, living room, separate study and two double bedrooms.

The Tides is an exclusive, sought-after residential park with a total of 23 homes. It is a safe, gated community with night lighting and an active resident's association.

The park is located just outside Watchet in Somerset, with stunning sea views of the Bristol channel and countryside views to side and back. The coast is a very short walk from the park.

Age restriction: Over 45s

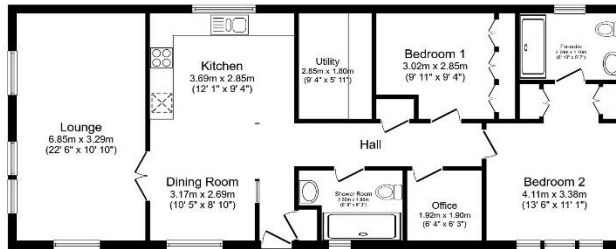
Pet friendly: Yes

Site fees (at time of listing): £176.15 pcm

Residential license

## Key Features

- Coastal Location
- Countryside Views
- Garden space
- Over 45s
- Part Exchange Available
- Pet-Friendly
- Pre-owned park home
- Residential Development
- Two Bedrooms
- Well maintained home



Total floor area 94.5 sq.m. (1,017 sq.ft.) approx

This floor plan is for illustrative purposes only. It is not drawn to scale. Any measurements, floor areas (including any total floor area), openings and orientation are approximate. No details are guaranteed, they cannot be relied upon for any purpose and they do not form part of any agreement. No liability is taken for any error, omission or misstatement. A party must rely upon its own inspection(s). Powered by [www.bosspart.com](http://www.bosspart.com)



## House to sell?

Hassle-free Property Part-Exchange is available from Quickmove Properties, with no estate agent fees, no solicitor's fees and no market uncertainty.

## CONTACT US

01793 840917

[advice@quickmoveproperties.co.uk](mailto:advice@quickmoveproperties.co.uk)

**Quickmove**  
PROPERTIES



The Property  
Ombudsman