

# Royale Heights, Poole, Dorset, BH16



£249,950





This pre-owned, modern park bungalow (42'x20') is perfect for those looking for a detached, easy to maintain, bungalow style retirement property. The home has a galley-style kitchen, dining and living room with an electric fireplace, a study, two double bedrooms, an en suite and a bathroom. The exterior features a driveway and garden space.

This home is located on Royale Heights, a private, gated development in a wooded elevated setting with a private fishing lake on site. The development is convenient due to easy access to neighbouring towns including the traditional town of Wimborne, Poole, and Bournemouth, as well as surrounding country parks including the New Forest and Hartland Moor National Nature Reserve which offer wonderful walking trails.

Age restriction: Over 45s

Pet friendly: Yes (2 per home)

Site fees: £290 per month

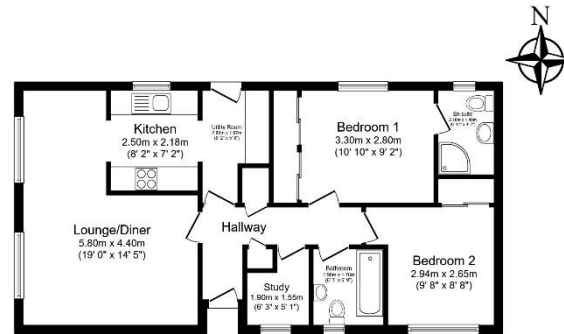
Residential license

### House to sell?

Hassle-free Property Part-Exchange is available from Quickmove Properties, with no estate agent fees, no solicitor's fees and no market uncertainty.

### Key Features

- Garden space
- Modern design
- Over 50s
- Part Exchange Available
- Pet-Friendly
- Pre-owned park home
- Private
- Gated Development
- Residential Development
- Two Double Bedrooms



Total floor area 67.7 m<sup>2</sup> (729 sq.ft.) approx

This floor plan is for illustrative purposes only. It is not drawn to scale. Any measurements, floor areas (including any total floor area), openings and orientation are approximate. No details are guaranteed, they cannot be relied upon for any purpose and they do not form part of any agreement. No liability is taken for any error, omission or misstatement. A party must rely upon its own inspection(s). Powered by [www.floorplan.com](http://www.floorplan.com)



## CONTACT US

01793 840917

[advice@quickmoveproperties.co.uk](mailto:advice@quickmoveproperties.co.uk)

