

# Darlington, County Durham, DL2



£184,950



This brand new, modern-furnished ABI Beaumont (43'x14') luxury park home is perfect for those looking for a detached, easy to maintain, bungalow-style property. This home features fitted kitchen with integrated appliances, and an open plan living and dining area. The home has two bedrooms and a family bathroom.

Darlington is just a few minutes from the park and has plenty of amenities, including a leisure centre, shops, theatre and restaurants. Nearby Rockliffe Hall has an 18 hole championship golf course, as well as a five-star spa experience. South Park's beautifully manicured grounds and Broken Scar's wooded landscape are perfect spots for enjoying nature.

Age restriction: Over 45s

Pet friendly: 2 dogs

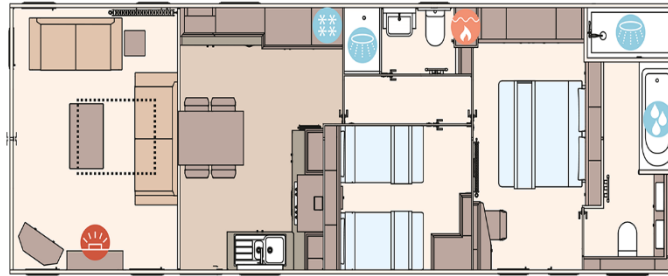
Site fees (at time of listing): £240 per month

Residential license

Stock images have been used, the home on-site may vary

### Key Features

- Brand new home
- Fully Furnished
- Garden Shed
- Over 45's
- Parking Space
- Private
- Part Exchange Available
- Pet-friendly
- Gated Development
- Residential Development



### House to sell?

Hassle-free Property Part-Exchange is available from Quickmove Properties, with no estate agent fees, no solicitor's fees and no market uncertainty.

### CONTACT US

01793 840917

[advice@quickmoveproperties.co.uk](mailto:advice@quickmoveproperties.co.uk)

