

# Morpeth, Northumberland, NE65

**Quickmove**  
PROPERTIES



£225,000

 x 2

 x 2

This brand-new, modern-furnished Lesko Winchester (42'x20') luxury park home is perfect for those looking for a detached, easy-to-maintain, bungalow-style property. The home has a spacious kitchen and dining area, separate living room, two double bedrooms, an en suite and bathroom.

Found on the stunning Northumberland Coast, this residential development is a secluded and peaceful retreat with direct beachfront access. With a nature reserve and discovery centre next door, this development is ideal for those aiming to get back to nature. The park offers fantastic facilities on-site for owners. Many nearby castles, islands, and heritage sites are ready to be explored. The harbour town of Amble is a perfect place to visit, with boat tours of Coquet Island, sea-fishing, and a marketplace.

Age restriction: Over 45s

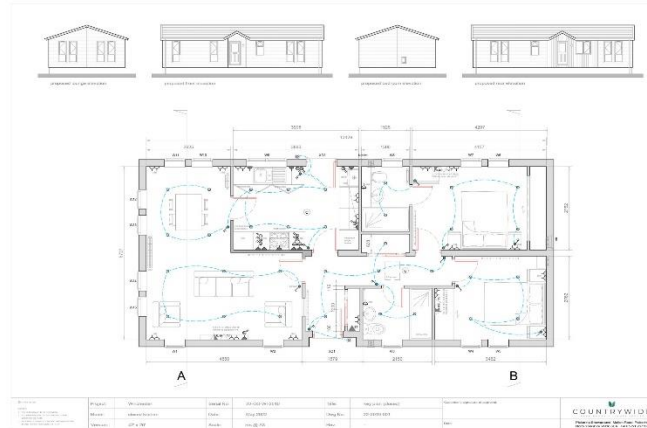
Pet friendly: Yes

Site fees (at time of listing): £250 per month

Residential license

### Key Features

- Beachfront access
- Brand new home
- Coastal Location
- Community Living
- Exceptionally High Specification
- Modern design
- Over 45s
- Part Exchange Available
- Pet-Friendly
- Residential Park Home



**House to sell?**

Hassle-free Property Part-Exchange is available from Quickmove Properties, with no estate agent fees, no solicitor's fees and no market uncertainty.

## CONTACT US

01793 840917

[advice@quickmoveproperties.co.uk](mailto:advice@quickmoveproperties.co.uk)

