

Stratford-Upon-Avon, Warwickshire, CV37



Price as listed



This brand new, modern furnished Omar Image (40'x20') park home is perfect for those looking for a detached, easy to maintain, bungalow-style retirement property. The home features a modern kitchen and dining area, a comfortable living room, two bedrooms and two bathrooms. The garden area is neat and easy to maintain.

This fully residential pet-friendly development is exclusive for the over 50s. The park is private and gated to offer safe and secure living. Nestled on the edge of the beautiful Cotswolds, this brand-new development has a stunning backdrop of rolling countryside, whilst boasting excellent transport routes to nearby Stratford-upon-Avon, the Cotswolds and Chipping Campden.

Age restriction: Over 50s

Pet friendly: Yes

Site fees (at time of listing): £229.37 pcm

Residential license

Stock images have been used, the home on site may vary.

Key Features

- Brand new home
- Bus stop at park entrance
- Close To Nearby Amenities
- Garden space
- Modern fitted kitchen and bathrooms
- Over 50s
- Part-Exchange available for price certainty
- Pet-Friendly
- Private, Gated Development

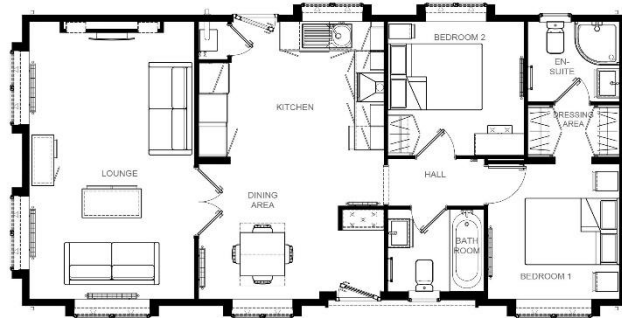


Image 40' x 20' 2DB



House to sell?

Hassle-free Property Part-Exchange is available from Quickmove Properties, with no estate agent fees, no solicitor's fees and no market uncertainty.

CONTACT US

01793 840917

advice@quickmoveproperties.co.uk

Quickmove
PROPERTIES



The Property
Ombudsman