

Mansfield, Nottinghamshire, NG19



£230,000



This brand-new, modern-furnished Omar Regency (36'x20') luxury park home is perfect for those looking for a detached, easy-to-maintain, bungalow-style property. The home features a spacious kitchen and dining room, comfortable living space, two double bedrooms, an en suite and a bathroom.

The park offers easy access to the historic Sherwood Forest with amenities close by. Mansfield has a busy town centre with a train station, theatre and high street shops. Sherwood Forest Golf Club is nearby, as are various parks and areas of local interest. Mansfield is located between the larger cities of Nottingham and Sheffield. The Peak District National Park is also under an hour from the park, where you can find walking routes, hikes and picturesque villages.

Age restriction: Over 45s

Pet friendly: Yes

Site fees (at time of listing): TBC

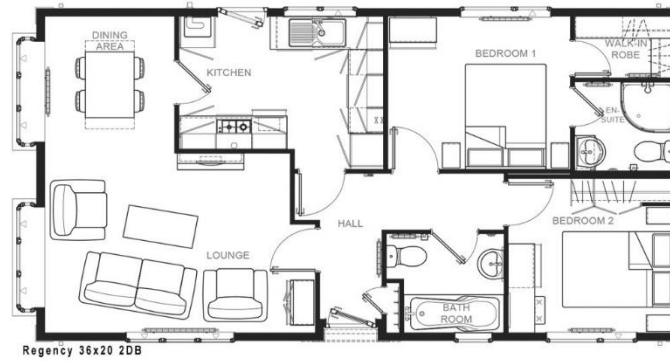
Residential license

House to sell?

Hassle-free Property Part-Exchange is available from Quickmove Properties, with no estate agent fees, no solicitor's fees and no market uncertainty.

Key Features

- Brand new home
- Community Living
- Countryside location
- Exceptionally High Specification
- Fully Furnished
- Over 45s
- Part Exchange Available
- Pet-Friendly
- Residential Development
- Town facilities nearby



CONTACT US

01793 840917

advice@quickmoveproperties.co.uk

