

# Scunthorpe, Lincolnshire, DN16

# Quickmove PROPERTIES



£85,950

 x 2

 x 1

This pre-owned Omar Regency (36'x12') benefits from an open plan layout, featuring a modern kitchen and two bedrooms as well as a bathroom with a shower. The exterior features a driveway, storage shed and a small, raised patio.

This established residential development is exclusive for the over 45's, it is pet-friendly and offers its residents a safe and welcoming environment within a like-minded community. The development is well located with a bus stop outside the park. The nearest train station is less than 2 miles away, offering transport links to nearby cities. The Ashby Ville Nature Reserve is 2 miles from the park, offering walking trails and wildlife viewing opportunities. For golfers, the Holme Hall Golf Club is 3 miles away with its championship course that is open to visiting players and members.

Age restriction: Over 45's

Pet friendly: Yes

Site fees (at time of listing): £185.15 per month

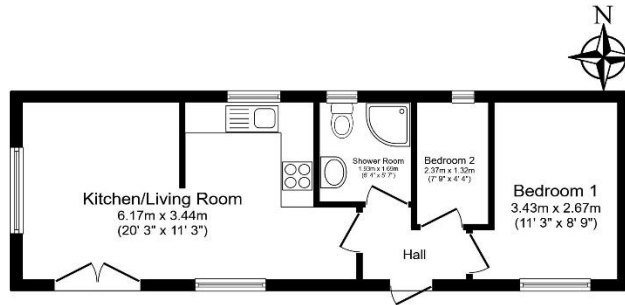
Residential license

### House to sell?

Hassle-free Property Part-Exchange is available from Quickmove Properties, with no estate agent fees, no solicitor's fees and no market uncertainty.

### Key Features

- Bus Stop Nearby
- Driveway
- Open Plan Living Area
- Over 45s
- Part Exchange
- Pet-Friendly
- Pre-owned park home
- Residential Development
- Community Living
- Two bedrooms



Total floor area 37.6 sq.m. (405 sq.ft.) approx

This floor plan is for illustrative purposes only. It is not drawn to scale. Any measurements, floor areas (including any total floor area), openings and orientation are approximate. No details are guaranteed, they cannot be relied upon for any purpose and they do not form part of any agreement. No liability is taken for any error, omission or misstatement. A party must rely upon its own inspection(s). Powered by [www.housesagent.com](http://www.housesagent.com)



## CONTACT US

01793 840917

[advice@quickmoveproperties.co.uk](mailto:advice@quickmoveproperties.co.uk)

