

# Vale Of York, Yorkshire, YO8



£224,950



This brand new, modern-furnished Prestige Sonata (40'x20') luxury park home features comfortable furniture and a modern kitchen with integrated appliances and each home comes with an 8'x10' shed.

This brand-new residential development is exclusive for the over 50s, with lakeside homes available, offering friendly community living for like-minded people. The park features a gated entrance with CCTV, providing a safe environment that is not often found in urban areas. The park is in the process of expanding, with plans for a fishing lake and communal shops scheduled for next year.

The 45-acre park is well located in Yorkshire. Right next door to Selby Golf Course, only 4 miles from the historic market town of Selby, which in a recent Halifax survey was voted "top spot" in Yorkshire when it comes to quality of life. A safe and secure gated community with a village green, nature area and on-site fishing.

Age restriction: Over 50's

Pet friendly: Yes

Site fees: £252.73 per month

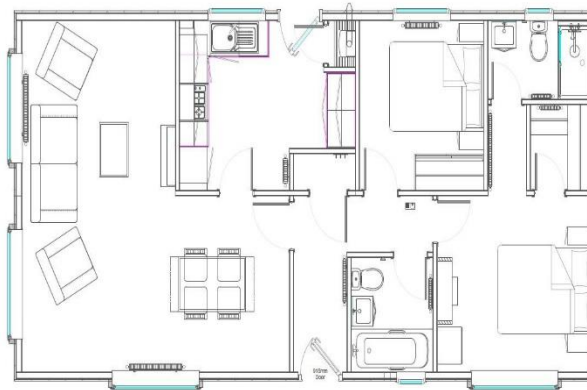
Stock images have been used, the home on site may vary

### House to sell?

Hassle-free Property Part-Exchange is available from Quickmove Properties, with no estate agent fees, no solicitor's fees and no market uncertainty.

### Key Features

- Brand new home
- CCTV Security System
- Over 50s
- Part Exchange Available
- Pet-Friendly
- Popular Residential Park
- Private
- Gated Development
- Residential Park Home
- Shops and amenities nearby



## CONTACT US

01793 840917

[advice@quickmoveproperties.co.uk](mailto:advice@quickmoveproperties.co.uk)

**Quickmove**  
PROPERTIES

