

Huddersfield, West Yorkshire, HD8



£229,995



This brand-new, modern-furnished Prestige Sonata (42'x20') luxury park home is perfect for those looking for a detached, easy-to-maintain, bungalow-style property. The home has a modern, spacious kitchen with integrated appliances, a comfortable living and dining area, two double bedrooms, an en suite and a bathroom.

The residential park home development is located on a slight hillside slope providing panoramic views of the surrounding countryside. The development is in the village Clayton West, near the picturesque village of Denby Dale. A range of restaurants, shops and other amenities are only a short drive away. Found between the Yorkshire Dales and the Peak District, with sprawling countryside, idyllic villages, and historic locations within easy reach. The larger market town of Huddersfield is 30 minutes' drive from the park, and the city of Sheffield is 45 minutes away.

Age restriction: Over 45s

Pet friendly: Yes

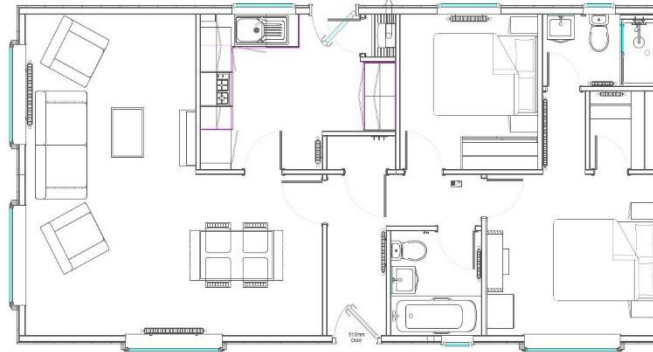
Site fees: £283.50 per month

Residential license

Council Tax Band A

## Key Features

- Brand new home
- Community Living
- Countryside location
- Exceptionally High Specification
- Modern design
- Over 45s
- Part Exchange Available
- Pet-Friendly
- Private, Gated Development



## CONTACT US

01793 840917

[advice@quickmoveproperties.co.uk](mailto:advice@quickmoveproperties.co.uk)

**Quickmove**  
PROPERTIES

