

Broadway Park, Broadway, Worcestershire, WR12

Quickmove
PROPERTIES



£190,000

 x 2

 x 1

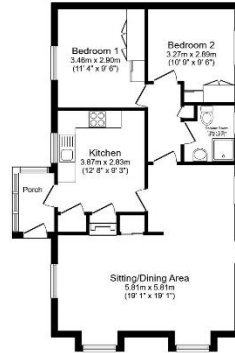
We are pleased to offer this well-maintained park home, situated on a sought-after residential park. This home offers spacious modern living including a kitchen, two bedrooms, a shower room, outside private garden space with a greenhouse and a driveway.

This home is located on popular Broadway Park, a private development of detached luxury park homes. It is in a village setting on the edge of the Cotswolds just ten minutes from the charming Broadway. This residential park is close to amenities including local shops, cafes, and post office. The market town of Evesham is 5 miles from the park, where you can find high street shops and a train station.

Age restriction: Over 50s
 Pet friendly: Yes (1 dog or cat)
 Site fees: £183 per month
 Residential license

Key Features

- Bus stop at park entrance
- Garden space
- Part Exchange Available
- Pre-owned park home
- Two Bedrooms
- Well maintained home
- Residential Development
- Greenhouse



Total floor area 70.2 m² (756 sq.ft.) approx

This floor plan is for illustrative purposes only. It is not drawn to scale. Any measurements, floor areas (including any total floor area), openings and orientation are approximate. No details are guaranteed, they cannot be relied upon for any purpose and they do not form part of any agreement. No liability is taken for any error, omission or misstatement. A party must rely upon its own inspection(s). Powered by www.housingagent.com



House to sell?

Hassle-free Property Part-Exchange is available from Quickmove Properties, with no estate agent fees, no solicitor's fees and no market uncertainty.

CONTACT US

01793 840917

advice@quickmoveproperties.co.uk

