

Swiss Farm Park, Henley-On-Thames, Oxfordshire, RG9

Quickmove
PROPERTIES



£255,000

 x 2

 x 2

This is a well presented two bedroom park home (837 sq.ft) located on this sought after residential park in Henley On Thames. The home enjoys uninterrupted views across the neighbouring fields, a lawned garden space and a driveway. The home has a kitchen and utility room, living room with an electric fireplace and dining area, two bedrooms, an en suite with a walk-in shower and a bathroom.

Swiss Farm Park is located in the lively town of Henley-on-Thames, Oxfordshire, famous for its annual Royal Regatta. The park is delightfully landscaped, and meticulously maintained. The immediate surrounding area includes the Oxfordshire Cotswolds and the beautiful Chiltern Hills. The park is also within walking distance from the town of Henley-on-Thames, where you can find all the local amenities.

Age restriction: Over 50s

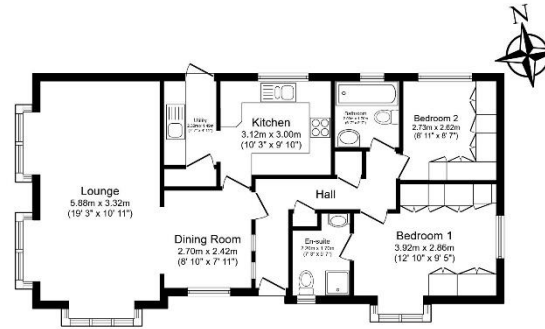
Pet friendly: Yes

Site fees (at time of listing): £221.43 per month

Residential license

Key Features

- Community Living
- Garden space
- Outstanding Location
- Over 50s
- Part Exchange Available
- Pet-Friendly
- Pre-owned park home
- Residential Development
- Two Bedrooms
- Well maintained home



Total floor area 77.7 m² (837 sq. ft.) approx

This floor plan is for illustrative purposes only. It is not drawn to scale. Any measurements, floor areas (including any total floor area), openings and orientation are approximate. No details are guaranteed, they cannot be relied upon for any purpose and they do not form part of any agreement. No liability is taken for any error, omission or misstatement. A party must rely upon its own inspection(s). Powered by www.floorplans.com



House to sell?

Hassle-free Property Part-Exchange is available from Quickmove Properties, with no estate agent fees, no solicitor's fees and no market uncertainty.

CONTACT US

01793 840917

advice@quickmoveproperties.co.uk

Quickmove
PROPERTIES

