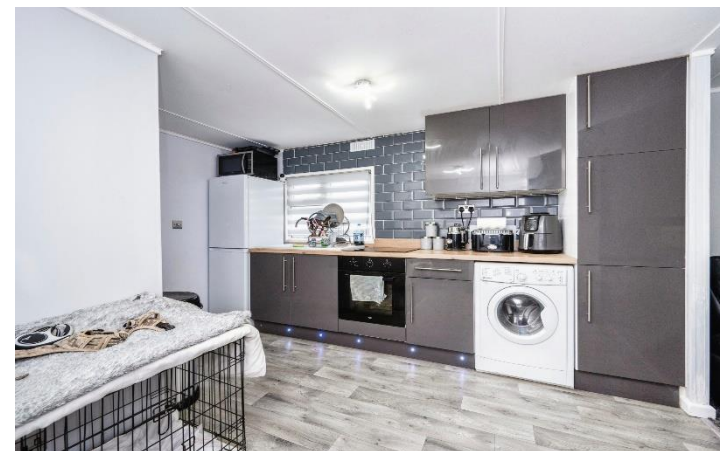


Luton, Bedfordshire, LU1



£175,000



This is a well-presented 42'x12' two-bedroom park home bungalow. The home is in excellent order with a contemporary kitchen, comfortable living room, bathroom with a tub and shower head, two bedrooms and a private garden area with a brick shed.

This park features great open spaces and wonderful views and is a short walk from the nearby village. The development is situated in the village of Woodside approximately 2 miles from the centre of Luton and 3 miles from the market town of Dunstable. In Woodside, you can find a local shop, pubs, and village green. Luton provides the nearest supermarket and dentist, and Caddington Village just 2 miles away provides your nearest doctor and golf course.

Age restriction: Over 25s

Pet friendly: No

Site fees (at time of listing): £236.12 per month

Residential license

Key Features

- Garden space
- Over 25s
- Pre-owned park home
- Residential Development
- Two Bedrooms
- Well maintained home
- Modern kitchen
- Community living
- Outdoor shed
- No updating required



House to sell?

Hassle-free Property Part-Exchange is available from Quickmove Properties, with no estate agent fees, no solicitor's fees and no market uncertainty.

CONTACT US

01793 840917

advice@quickmoveproperties.co.uk

