

Wimborne, Dorset, BH21



£250,000



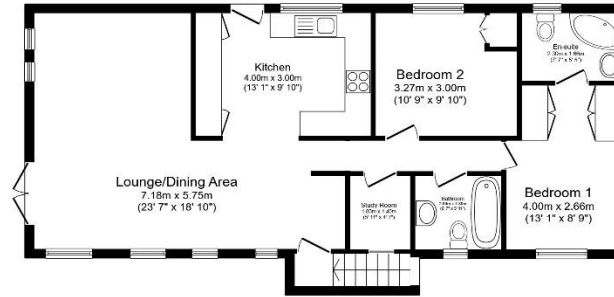
A two double bedroom detached park home bungalow which backs onto the country park. The home is a 45x20 Omar Newmarket with an en-suite shower room, modern fitted kitchen and a decked patio to the rear.

The home is set within a private 60-acre gated country estate, offering secure lifestyle living for like-minded over 45s. A short distance from this development is the Moors Valley Country Park which provides lots of outdoor pursuits with beautiful walks, cycle paths and a golf course. The nearby market town of Wimborne boasts one of the largest open and covered markets in the south of England.

Age restriction: Over 45's
 Pet friendly: Yes (2 per home)
 Site fees: £300.78 per month
 Residential license

Key Features

- Community Living
- Countryside location
- Garden space
- Pet-Friendly
- Pre-owned park home
- RoyaleLife development
- Private
- Gated Development
- Residential Development
- Well maintained home



Total floor area 80.3 sq.m. (865 sq.ft.) approx
This floor plan is for illustrative purposes only. It is not drawn to scale. Any measurements, floor areas (including any total floor area), openings and orientation are approximate. No details are guaranteed. They cannot be relied upon for any purpose and they do not form part of any agreement. No liability is taken for any error, omission or misstatement. A party must rely upon its own inspection(s). Powered by www.houseagent.com



House to sell?
 Hassle-free Property Part-Exchange is available from Quickmove Properties, with no estate agent fees, no solicitor's fees and no market uncertainty.

CONTACT US

01793 840917

advice@quickmoveproperties.co.uk

