

Bordon, Hampshire, GU35



£365,000



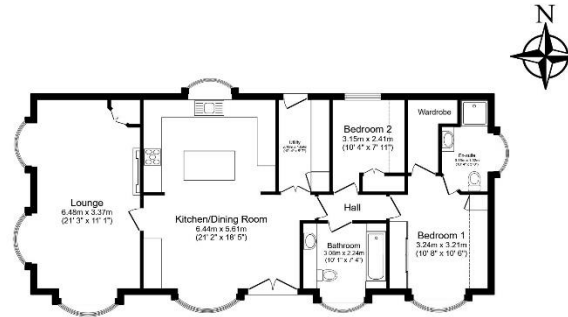
This pre-owned, well maintained Stately Topaz bungalow (50'x22') is perfect for those looking for a detached, easy to maintain, bungalow-style property. The interior features a modern spacious kitchen, leading to a comfortable living room, there are two double bedrooms, the master having an ensuite with a walk-in shower and a large walk-in wardrobe. There is also a second bathroom with a large bathtub and a utility room. The exterior of this home has a garden space and a driveway for 2 cars.

The park is surrounded by stunning countryside in a beautiful corner of East Hampshire. While the setting is secluded and peaceful, you're also close to the hustle and bustle of larger towns such as Alton, Fareham, Haslemere, Guildford and the charming market town of Petersfield. The development is also just minutes away by car from Whitehill Forest shopping centre.

Age restriction: Over 45's
 Site fees: £278 per month
 Pet friendly: Yes
 Residential licence

Key Features

- Exceptionally High Specification
- Garden space
- Modern design
- Over 45s
- Part Exchange Available
- Pet-Friendly
- Pre-owned park home
- Private, Gated Development
- Residential Development



Total floor area 103.0 sq.m. (1,109 sq.ft.) approx
This floor plan is for illustrative purposes only. It is not drawn to scale. Any measurements, floor areas (including any total floor area), openings and orientation are approximate. No details are guaranteed. They cannot be relied upon for any purpose and they do not form part of any agreement. No liability is taken for any error, omission or misstatement. A party must rely upon its own inspection(s). Powered by www.floorplan.com



House to sell?
 Hassle-free Property Part-Exchange is available from Quickmove Properties, with no estate agent fees, no solicitor's fees and no market uncertainty.

CONTACT US
 01793 840917
advice@quickmoveproperties.co.uk

