

Newton Abbot, Devon, TQ12

Quickmove
PROPERTIES



£240,000



x 2



x 2

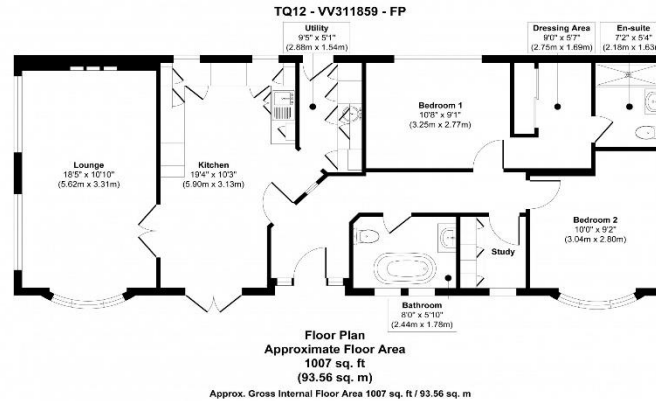
This pre-owned, modern-furnished luxury park bungalow (50'x20') is perfect for those looking for a detached, easy to maintain, bungalow style property. The landscaped exterior boasts a large decking, garden area and parking spaces. The home features a modern, fitted kitchen/diner, living room with comfortable furniture and two double bedrooms.

Set in picture-postcard surroundings, the pet-friendly park has very spaced out and landscaped plots and is tailor-made for the over 45s. This RoyaleLife development is located in a good spot for enjoying the Devon countryside. Stover Country Park contains over 114 acres of woodland, heathland, a lake, and a variety of wildlife. It is a site of special scientific interest as it is protected by law to conserve its wildlife and geology. Dartmoor National Park has open moorlands and deep river valleys, with a rich history and rare wildlife.

Age restriction: Over 45's
 Pet friendly: Yes
 Site fees: £234.01
 12-month leisure license

Key Features

- 12-month leisure license
- Community living
- Countryside walks
- Driveway
- En suite
- Luxury 2 bed park bungalow
- Over 45's
- Pet-friendly
- Pre-loved park home
- Private decking



CONTACT US

01793 840917

advice@quickmoveproperties.co.uk

