

# Hockley, Essex, SS5



£159,950



This Omar Regency (33x14), pre-owned park home is perfect for those looking for a detached, easy-to-maintain, bungalow-style property. The home is set on a corner plot and features a kitchen with integrated appliances, a relaxing lounge space and a double bedroom. The exterior boasts a parking space and manageable garden area.

The park is nestled alongside the stunning River Crouch which is visited each year by thousands of water birds, offering a tranquil and pleasing lifestyle while maintaining the community feel.

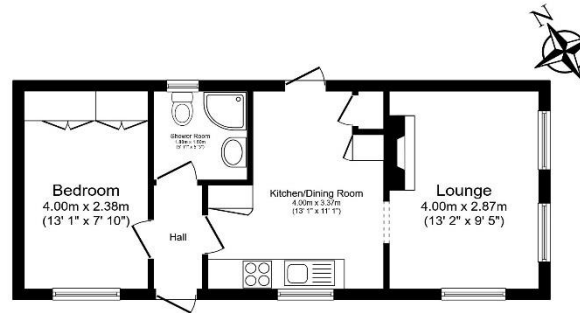
The park is located in the hamlet of Hullbridge and just 8 miles away is the seaside resort of Southend and the famous Cliffs Pavillion. From the park, residents can enjoy lovely riverside walks to the ancient village of Hullbridge and bus services are available to all local towns. The Essex Coast is home to varied and rare wildlife.

Age restriction: Over 50's  
 Pet friendly: No  
 Site fees: £308 per month

**House to sell?**  
 Hassle-free Property Part-Exchange is available from Quickmove Properties, with no estate agent fees, no solicitor's fees and no market uncertainty.

### Key Features

- Close To The Coast
- Garden space
- One Double Bedroom
- Over 50s
- Part Exchange Available
- Pre-owned park home
- Regular bus service nearby
- Residential Development



Total floor area 39.5 m<sup>2</sup> (425 sq.ft.) approx  
\*This floor plan is for illustrative purposes only. It is not drawn to scale. Any measurements, floor areas (including any total floor areas), readings and orientation are approximate. No liability is accepted. They cannot be relied upon for any purpose and they do not form part of any agreement. No liability is taken for any error, omission or misstatement. A party must rely upon its own inspection(s). Provided by www.localagent.com



## CONTACT US

01793 840917

advice@quickmoveproperties.co.uk

