

# Swansea, Wales, SA3

**Quickmove**  
PROPERTIES



£225,000





This brand new, modern-furnished Omar Image (42'x20') luxury park home is perfect for those looking for a detached, easy to maintain, bungalow-style property. The home features a kitchen with integrated appliances, a comfortable living room, two double bedrooms, an en suite and a bathroom. The home also has parking for 2 cars.

This development is located 8 miles west of Swansea, and is situated along the Gower Peninsula, one of the most picturesque areas of coastline in South Wales and surrounded by beautiful woodland. A 15-minute walk from the park is the village of Kittle, which hosts a variety of shops, and just 4 miles from Killay Shopping Centre.

Age restriction: Over 50s

Pet friendly: Yes

Site fees: £161 per month

Residential license

Internal stock images have been used.

### Key Features

- Brand new home
- Cat Friendly
- Countryside location
- Exceptionally High Specification
- Fully Furnished
- Landscaped Park
- Over 50s
- Part Exchange Available
- Residential Development
- Two Double Bedrooms

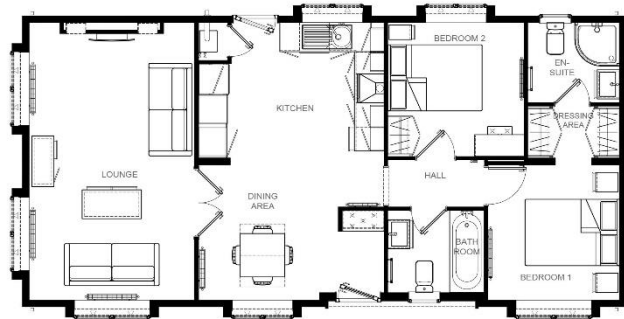
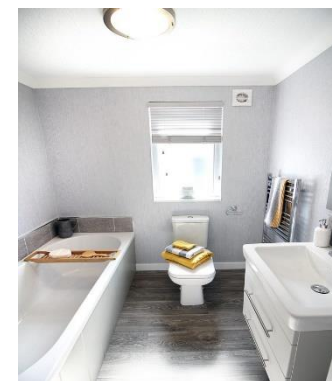


Image 40' x 20' 2DB



### House to sell?

Hassle-free Property Part-Exchange is available from Quickmove Properties, with no estate agent fees, no solicitor's fees and no market uncertainty.

### CONTACT US

01793 840917

advice@quickmoveproperties.co.uk

