

Blairgowrie, Perthshire, PH10



£157,950



This brand new, modern-furnished Willerby Kingswood luxury park home (40'x20') is perfect for those looking for a detached, easy to maintain, bungalow-style property. The home features a modern kitchen with integrated appliances, a comfortable living area, two bedrooms and two bathrooms.

This small residential development is exclusive for the over 50s and is situated on the banks of Marlee Loch and offers a stream and wooded area teeming with wildlife, providing an idyllic setting for your new home. The park is located in Kinloch approx 1.8 miles from Blairgowrie. Blairgowrie bus route has a bus stop directly outside the park gates. Blairgowrie offers a whole host of local amenities including doctors, dentists, vets and supermarkets.

Age restriction: Over 50s

Pet friendly: 2 per home

Site fees (at time of listing): £158 per month

Residential license

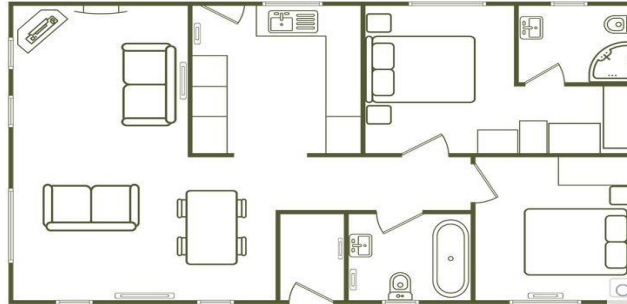
Stock images have been used, the home on-site may vary

House to sell?

Hassle-free Property Part-Exchange is available from Quickmove Properties, with no estate agent fees, no solicitor's fees and no market uncertainty.

Key Features

- Brand new home
- Community Living
- Exceptionally High Specification
- Fully Furnished
- Over 50s
- Pet-Friendly
- Residential Development
- Rural Location
- Situated on a Loch
- Town facilities nearby



CONTACT US

01793 840917

advice@quickmoveproperties.co.uk

