

St Austell, Cornwall, PL26



£315,000



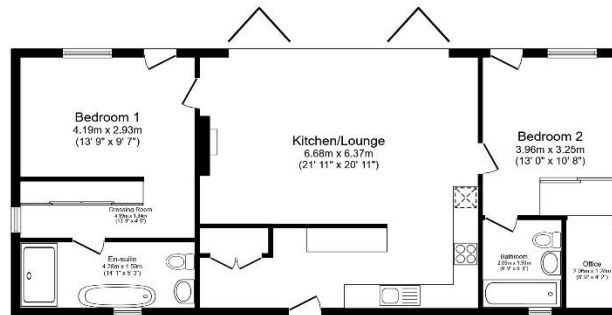
This is a luxurious two double bedroom (48'x22') Prestige Hampton park home occupying an elevated position on this sought after residential park for the over 50's. The home boasts spectacular views over open countryside with a large decking and garden space. The home has an open plan kitchen, dining and living area, with large bi-fold doors, and two double bedrooms each with an en suite.

This is a lovely residential development that enjoys an elevated rural setting between farmland and with stunning countryside views. The development is set in 12 acres of land in the centre of mid Cornwall a few miles from the A30. Views of the North Cornish coast some ten miles away can be seen from the park and the south coast is about eight miles away.

Age restriction: Over 50s
 Pet friendly: Yes
 Site fees: £205 per month
 Residential license

Key Features

- Decking
- Garden space
- Luxury Park Home
- Modern design
- Over 50s
- Part Exchange Available
- Pet-Friendly
- Residential Park Home
- Spectacular Views
- Two Double Bedrooms



Total floor area 90.8 sq.m. (977 sq.ft.) approx
This floor plan is for illustrative purposes only. It is not drawn to scale. Any measurements, floor areas (including any total floor area), openings and orientation are approximate. No details are guaranteed, they cannot be relied upon for any purpose and they do not form part of any agreement. No liability is taken for any error, omission or misstatement. A party must rely upon its own inspection(s). Powered by www.quickmove.com



House to sell?
 Hassle-free Property Part-Exchange is available from Quickmove Properties, with no estate agent fees, no solicitor's fees and no market uncertainty.

CONTACT US
 01793 840917
 advice@quickmoveproperties.co.uk

