

# Thetford, Norfolk, IP24



£219,950



This well-maintained, modern, pre-owned park home is perfect for those looking for a detached, easy to maintain, bungalow-style retirement property. The home has a spacious kitchen and a separate dining and living area. There are two double bedrooms, an en suite to the master bedroom and a family bathroom. The garden space includes and easy to maintain lawn and patio area.

Set within landscaped grounds, this gated development is ideal for making the most of wonderful walking trails as well as local amenities. This development is located near Great Hockham, a highly sought-after village in Norfolk. This location offers residents the opportunity to enjoy a quintessentially English lifestyle with access to local amenities, walks and culture.

Age restriction: Over 45s

Pet friendly: Yes

Site fees: £202.60 per month

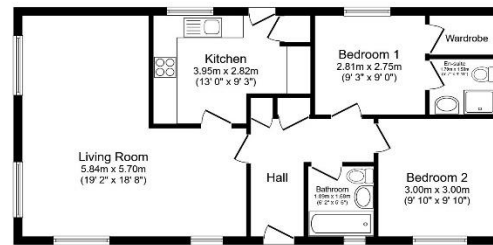
Residential license

### House to sell?

Hassle-free Property Part-Exchange is available from Quickmove Properties, with no estate agent fees, no solicitor's fees and no market uncertainty.

### Key Features

- Countryside location
- Exceptionally High Specification
- Garden space
- Modern design
- Over 45s
- Part Exchange Available
- Pet-Friendly
- Pre-owned park home
- Residential Development
- Two Bedrooms



Total floor area 71.3 m<sup>2</sup> (768 sq.ft.) approx

This floor plan is for illustrative purposes only. It is not drawn to scale. Any measurements, floor areas (including any total floor area), openings and orientation are approximate. No details are guaranteed. They cannot be relied upon for any purpose and they do not form part of any agreement. No liability is taken for any error, omission or misstatement. A party must rely upon its own inspection. Powered by www.foxagent.com



### CONTACT US

01793 840917

advice@quickmoveproperties.co.uk

