

# Gloucester, Gloucestershire, GL19

**Quickmove**  
PROPERTIES



£245,000

 x 2

 x 2

This brand new, modern-furnished Tingdene Barnwell (40'x20') luxury park home is perfect for those looking for a detached, easy to maintain, bungalow-style property. The homes features a fitted kitchen with integrated appliances, dining area and a living room with electric fireplace. There are two double bedrooms, an en suite and a bathroom.

This development is in the countryside between Gloucester and Cheltenham, popular towns with plenty of amenities and exciting events to enjoy. The River Severn flows through this area and there are many walking routes for keen ramblers. The Malverns can be found a short drive north of the park, and the Cotswolds can be found a short drive to the south.

Age restriction: Over 45s

Pet friendly: Yes

Site fees: £210 per month

Residential license

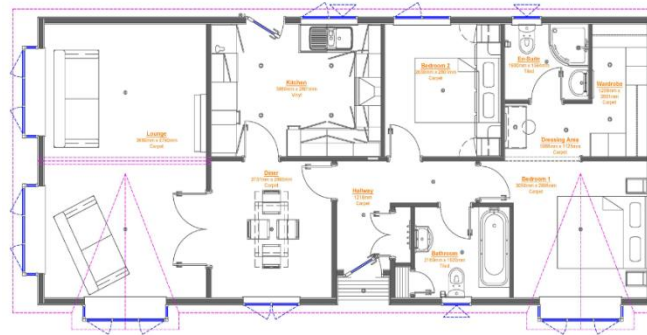
Stock images have been used, the home on site may vary.

### House to sell?

Hassle-free Property Part-Exchange is available from Quickmove Properties, with no estate agent fees, no solicitor's fees and no market uncertainty.

### Key Features

- Brand new home
- Community Living
- Exceptionally High Specification
- Fully Furnished
- Over 45s
- Part Exchange Available
- Pet-Friendly
- Private
- Gated Development
- Residential Development



### CONTACT US

01793 840917

[advice@quickmoveproperties.co.uk](mailto:advice@quickmoveproperties.co.uk)

**Quickmove**  
PROPERTIES



The Property  
Ombudsman