

# Luton, Bedfordshire, LU1

**Quickmove**  
PROPERTIES



£285,000

 x 2

 x 2

This brand new, modern-furnished Tingdene Overstone (40'x20') luxury park home is perfect for those looking for a detached, easy to maintain, bungalow-style property. The home features a spacious, modern, fully fitted kitchen with integrated appliances, a dining area and a breakfast bar. The living room features brand new furniture and large windows.

The development is situated in the village of Woodside approximately 2 miles from the centre of Luton and 3 miles from the pleasant market town of Dunstable. In Woodside, you can find a local shop, pubs and village green. Luton provides the nearest supermarket and dentist, and Caddington Village just 2 miles away provides your nearest doctor and golf course.

Age restriction: Over 25s

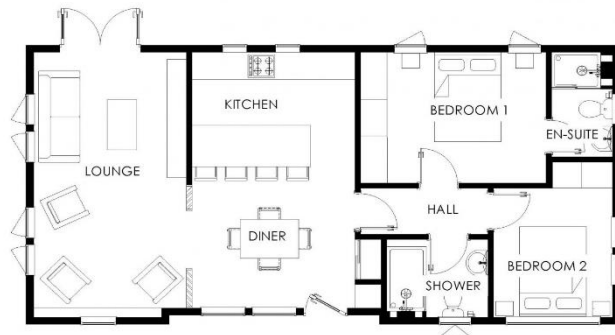
Pet friendly: Yes (1 cat or 1 dog)

Site fees (at time of listing): £63.21 per week

Residential license

## Key Features

- Brand new home
- Bus Stop Nearby
- Community Living
- Driveway
- Fully Furnished
- Over 25s
- Part Exchange Available
- Pet-friendly
- Residential Development
- Village location



## House to sell?

Hassle-free Property Part-Exchange is available from Quickmove Properties, with no estate agent fees, no solicitor's fees and no market uncertainty.

## CONTACT US

01793 840917

[advice@quickmoveproperties.co.uk](mailto:advice@quickmoveproperties.co.uk)

**Quickmove**  
PROPERTIES

