

Godalming, Surrey, GU8



Price as listed



This brand-new, modern-furnished Omar Cranbourne (50'x20') luxury park home is perfect for those looking for a detached, easy-to-maintain, bungalow-style property. The home features a modern and spacious kitchen with integrated appliances, utility room, and dining area, the living room features large windows and electric fireplace. There are two double bedrooms, and en suite and a bathroom. The home has a decked veranda, landscaped garden and parking space.

The park backs onto the Thursley Common National Park Reserve and has great transport links. The National Trust's Winkworth Aboretum is also nearby, a scenic preserved woodland. Godalming is a market town just 5 miles from the park. The larger town of Guildford is 10 miles away where you can find high street shops and entertainment venues.

Age restriction: Over 50s

Pet Friendly

Site fees (at time of listing): £298.63 per month

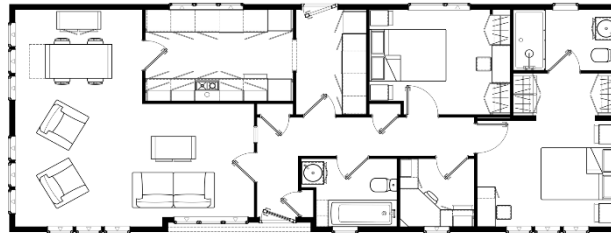
Residential license

House to sell?

Hassle-free Property Part-Exchange is available from Quickmove Properties, with no estate agent fees, no solicitor's fees and no market uncertainty.

Key Features

- Brand new home
- Community Living
- Decking
- Exceptionally High Specification
- Modern design
- Over 50s
- Part Exchange Available
- Pet-Friendly
- Residential Development
- Two Bedrooms



CONTACT US

01793 840917

advice@quickmoveproperties.co.uk

Quickmove
PROPERTIES

