

Weston-Super-Mare, Somerset, BS22

Quickmove  
PROPERTIES



Price as listed



This brand new, modern furnished (45'x20') luxury park home is perfect for those looking for a detached, easy-to-maintain, bungalow-style property. Park homes are designed to the highest possible specifications, with premium fixtures and fittings. They are modern, high-quality homes and boast a close-knit community that is so valuable to residential park home living.

The park is nestled in the scenic Somerset countryside, close to the lively seaside town of Weston-Super-Mare and the stunning Mendip Hills. A short walk will lead you to local shops, pubs, and restaurants, while a short drive brings you to the historic town of Wells with its magnificent cathedral. Further along the coast, you'll discover the towns of Burnham-on-Sea and Clevedon.

Age restriction: Over 45s

Pet friendly: Yes

Site fees: £225 per month

Residential license

### House to sell?

Hassle-free Property Part-Exchange is available from Quickmove Properties, with no estate agent fees, no solicitor's fees and no market uncertainty.

### Key Features

- Brand new home
- Fully Furnished
- Over 45s
- Pet-Friendly
- Residential Development
- Community living
- Up to 100% part exchange available
- Two bedrooms
- Modern home
- High specification

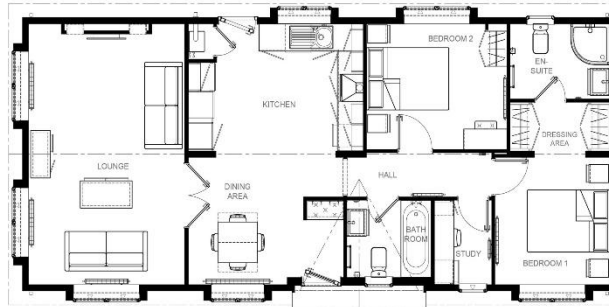


Image 45' x 20' 2DB



## CONTACT US

01793 840917

advice@quickmoveproperties.co.uk

