

Oakham, Rutland, LE15



Price as listed



This pre-owned park home (35'x12') is perfect for those looking for a detached, easy to maintain, bungalow style retirement property. The home features a kitchen, separate living room with large windows, one double bedroom, a study and a bathroom. The exterior features a driveway, a garden area overlooking the countryside, and a lean-to outbuilding.

Set within landscaped grounds, this is a stunning, pet-friendly, development surrounded by glorious countryside with country walks leading directly from the front door. The market town of Oakham is less than 10 minutes away offering a wide selection of shops and restaurants. The Rutland Water Nature Reserve is a short drive away.

Age restriction: Over 50s

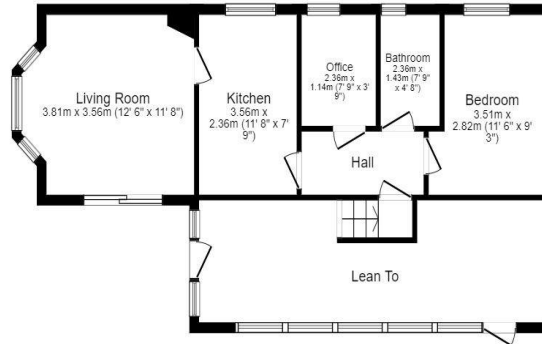
Pet friendly

Site fees: £141.18 per month

Residential license

Key Features

- Community Living
- Countryside Views
- Driveway
- Established Park
- Garden space
- Pre-owned park home
- Residential Development
- Study



House to sell?

Hassle-free Property Part-Exchange is available from Quickmove Properties, with no estate agent fees, no solicitor's fees and no market uncertainty.

CONTACT US

01793 840917

advice@quickmoveproperties.co.uk

