

# Plymouth, Devon, PL6

**Quickmove**  
PROPERTIES



Price as listed

 x 2

 x 1

This brand new, fully furnished Manor Warkton (35'x18') park home is perfect for those looking for a detached, easy to maintain, bungalow-style retirement property. The home has a spacious lounge, dining area and kitchen. Leading through to the hallway, the home has shower room and a double bedroom.

The park is located in an established and sought-after location approximately four miles north of Plymouth city centre. Local amenities include a post office, general store, hairdressers and a Park and Ride offering good links to the city and North. The area is largely flanked by woodlands that provide pleasant walks to Plymbridge. The Stannary town of Tavistock is located twelve miles away making excursions both enjoyable and convenient.

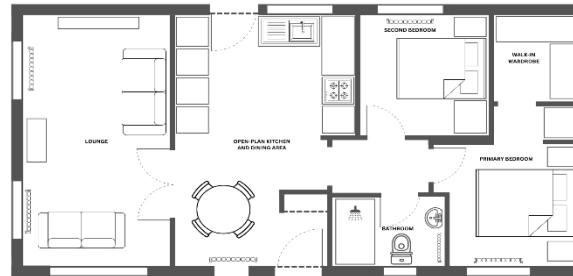
Age restriction: Over 50s  
 Pet friendly: Yes  
 Site fees: £245 per month  
 Residential license

### House to sell?

Hassle-free Property Part-Exchange is available from Quickmove Properties, with no estate agent fees, no solicitor's fees and no market uncertainty.

### Key Features

- Brand new home
- Community Living
- Exceptionally High Specification
- Fully Fitted Kitchen
- Modern design
- Stamp Duty Exempt
- Over 50s
- Part Exchange Available
- Popular Residential Park
- Residential Development



### CONTACT US

01793 840917

[advice@quickmoveproperties.co.uk](mailto:advice@quickmoveproperties.co.uk)

**Quickmove**  
 PROPERTIES

