

Bromyard, Herefordshire, HR7



Price as listed



This brand-new, modern-furnished Willerby Delamere (40'x20') luxury park home is perfect for those looking for a detached, easy-to-maintain, bungalow-style property. The home has a modern kitchen with integrated appliances, comfortable living room, two double bedrooms, an en suite and a bathroom.

Positioned in a unique and historic location, this gated residential development sits within the walls of an old castle, with turrets and ancient walls still in place. Nestled in rural Herefordshire, park residents enjoy access to the park-owned country estate with beautiful countryside walks and views across the Bromyard Downs and Malvern Hills. The Park boasts a lovely clubhouse, Laundry Facilities, Hair salon and most importantly a warm, friendly & active community of residents. Approximately a five-minute drive away is the highly attractive Sapey Golf & Country Club which offers a discount for park residents and hosts several events including quiz nights.

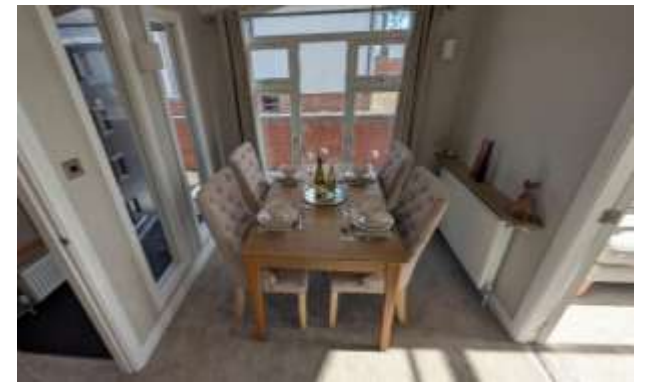
Age restriction: Over 45's
 Site fees: £242.12 per month
 Residential license

House to sell?

Hassle-free Property Part-Exchange is available from Quickmove Properties, with no estate agent fees, no solicitor's fees and no market uncertainty.

Key Features

- Brand new home
- Community Living
- Established Park
- Exceptionally High Specification
- Fully Furnished
- Modern design
- Over 45s
- Part Exchange for a Quick Sale
- Pet-Friendly
- Residential Development



CONTACT US

01793 840917

advice@quickmoveproperties.co.uk

Quickmove
 PROPERTIES

