

Wells, Somerset, BA5

Quickmove
PROPERTIES



Price as listed

 x 2  x 1

This is a unique opportunity to own a park home set in a fantastic location with uninterrupted views of the Mendip Hills and Cheddar Valley. The home has a spacious kitchen with an island, a dining area, a sunroom, and a living room with an electric fireplace. There is a double bedroom with fitted wardrobes, a second twin bedroom and a bathroom. The home is set on a large plot with a large, enclosed garden to the rear, a patio to the front and wraparound decking. The garden has two garden storage sheds and there is parking for two vehicles. The home is also within walking distance of a bus stop.

The development is close to the amenities of Wells, Glastonbury, Cheddar and Shepton Mallet with the coastal towns of Weston-Super-Mare, Burnham-On-Sea and Clevedon providing great days out. The surrounding area includes plenty of activities and dog-friendly places to visit, including Cheddar Caves, Westonbirt Arboretum and many National Trust properties.

Age restriction: Over 45s

Pet friendly

Site fees: £2,600 per year

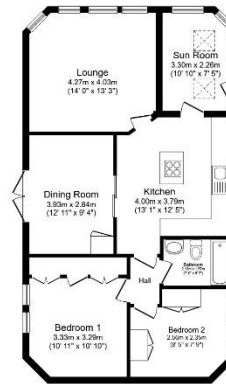
Residential license

House to sell?

Hassle-free Property Part-Exchange is available from Quickmove Properties, with no estate agent fees, no solicitor's fees and no market uncertainty.

Key Features

- Countryside location
- Over 45s
- Part Exchange Available
- Pet-Friendly
- Pre-owned park home
- Small development
- Two Bedrooms
- Large garden
- Decking with views



Total floor area 81.3 m² (875 sq.ft.) approx

This floor plan is for illustrative purposes only. It is not drawn to scale. Any measurements, floor areas (including any total floor area), openings and orientation are approximate. No details are guaranteed, they cannot be relied upon for any purpose and they do not form part of any agreement. No liability is taken for any error, omission or misstatement. A party must rely upon its own inspection(s). Powered by www.b-cadjet.com



CONTACT US

01793 840917

advice@quickmoveproperties.co.uk

Quickmove
PROPERTIES

