

# Woolacombe, Devon, EX34

**Quickmove**  
PROPERTIES



Price as listed



This Willerby Kingswood (40'x20') park home is perfect for those looking for a detached, easy to maintain, bungalow style property in a modern secluded development. This top of the range park home is designed to a high, luxury standard with an intelligent floor plan. The home features a modern kitchen with integrated appliances, a comfortable living area with floor to ceiling windows offering views of Lundy Island and Woolacombe Bay, two double bedrooms, an en suite and a bathroom.

Set in the rolling hills of North Devon, this modern and welcoming residential park is walking distance from the award winning, dog-friendly beach of Woolacombe Bay and offers stunning views of the surrounding countryside and the Atlantic Ocean. A bus stop is located just outside of the park, providing transport links to Barnstable and Croyde. The village of Woolacombe is just a short walk away, there you can find your local amenities as well as pubs, restaurants and leisure activities. This park is the perfect place to experience Woolacombe's strong history while enjoying all the benefits of the park home lifestyle.

Age restrictions: Over 50's

Pet friendly: Yes

Site fees: From £304.61 per month

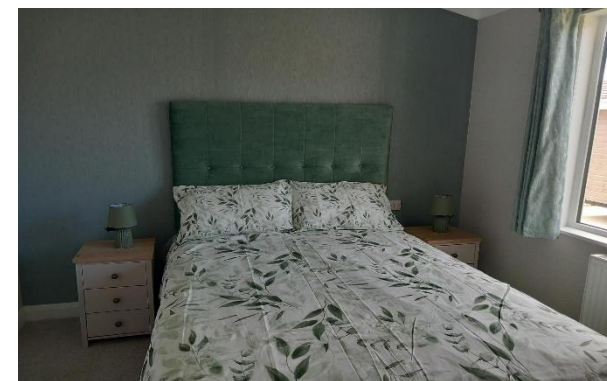
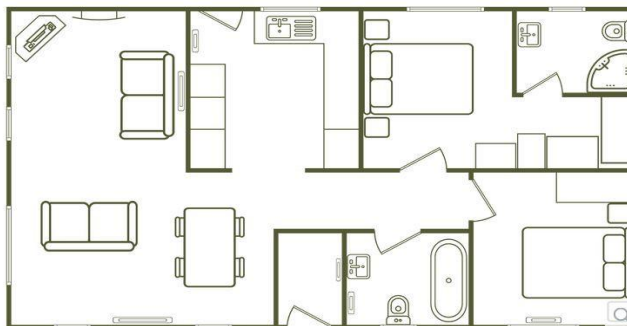
Residential license

### House to sell?

Hassle-free Property Part-Exchange is available from Quickmove Properties, with no estate agent fees, no solicitor's fees and no market uncertainty.

### Key Features

- Brand new home
- Coastal Location
- Countryside location
- Exceptionally High Specification
- Fully Furnished
- Modern design
- Over 45s
- Part Exchange Available
- Residential Development



### CONTACT US

01793 840917

[advice@quickmoveproperties.co.uk](mailto:advice@quickmoveproperties.co.uk)

**Quickmove**  
PROPERTIES

