

Golden Cross, East Sussex, BN27



Price as listed



This pre-owned, modern park home (40'x20') is perfect for those looking for a detached, easy to maintain, bungalow style property. The home features an open plan living room, kitchen with an island and dining area. The living area also includes large windows, a fireplace and French doors leading to a decked patio area.

This is an established, welcoming development exclusive for the over 45s offering friendly community living for like-minded people. The development is gated, providing you the security that is not often found in busy, urban areas. It is also well located in East Sussex to explore the wonderful countryside, seaside resort and attractions the county has to offer.

Age restriction: Over 45s

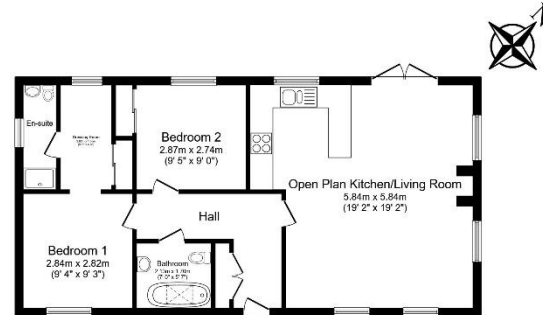
Pet friendly: Yes

Site fees (at time of listing): £3,271.42 per year

Residential license

Key Features

- Established Park
- Over 45s
- Part Exchange Available
- Pet-Friendly
- Private, Gated development
- Pre owned home
- Rural Location
- Shops and amenities nearby
- Two bedrooms
- Community living



Total floor area 68.8 m² (741 sq.ft.) approx

This floor plan is for illustrative purposes only. It is not drawn to scale. Any measurements, floor area (including any total floor area), openings and orientation are approximate. No details are guaranteed, they cannot be relied upon for any purpose and they do not form part of any agreement. No liability is taken for any error, omission or misstatement. A party must rely upon its own inspection(s). Powered by www.houagent.com



House to sell?

Hassle-free Property Part-Exchange is available from Quickmove Properties, with no estate agent fees, no solicitor's fees and no market uncertainty.

CONTACT US

01793 840917

advice@quickmoveproperties.co.uk

Quickmove
PROPERTIES

