

Whittingham, Northumberland, NE66



Price as listed



This wonderful Prestige Navigator (45'x22') lodge occupies an elevated position on this residential development of only 12 homes. The home features an open-plan kitchen, living room, and dining room, with French doors leading out onto the large decking. There is a utility room, a study, two double bedrooms, an en suite and a bathroom. The home has a large garden space with a shed and patio.

This residential development consists of 12 homes, located in the peaceful setting of Whittingham. Glanton village is just 1.5 miles from the park and has a pub and post office. A 10-minute drive away is Alnwick which is a large town with shops, amenities, and a medical centre. The park is located on the edge of Northumberland National Park, where you can walk for miles and miles in one of the UK's most beautiful areas. The Northumberland coastline is also just a 15-minute drive away.

Age restriction: Over 45s

Pet friendly: Yes

Site fees: £291 per month

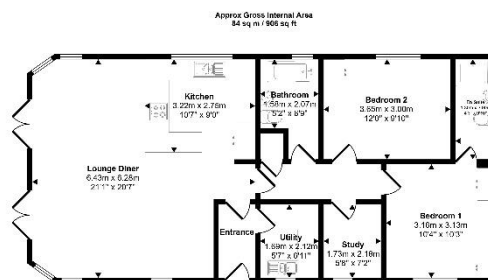
Residential license

House to sell?

Hassle-free Property Part-Exchange is available from Quickmove Properties, with no estate agent fees, no solicitor's fees and no market uncertainty.

Key Features

- Large Decked Area
- Modern design
- Over 45s
- Part Exchange Available
- Stunning Views
- Pet-Friendly
- Pre-owned park home
- Residential Development
- Two Bedrooms
- Village location



We have made every effort to ensure the accuracy of the floor plan contained here. Measurements of rooms, wherever shown, are not intended to be used as a guide to the actual size of the property. The floor plan is for information only and should not be used as a basis for any prospective purchase or lease.



CONTACT US

01793 840917

advice@quickmoveproperties.co.uk

Quickmove
PROPERTIES

